

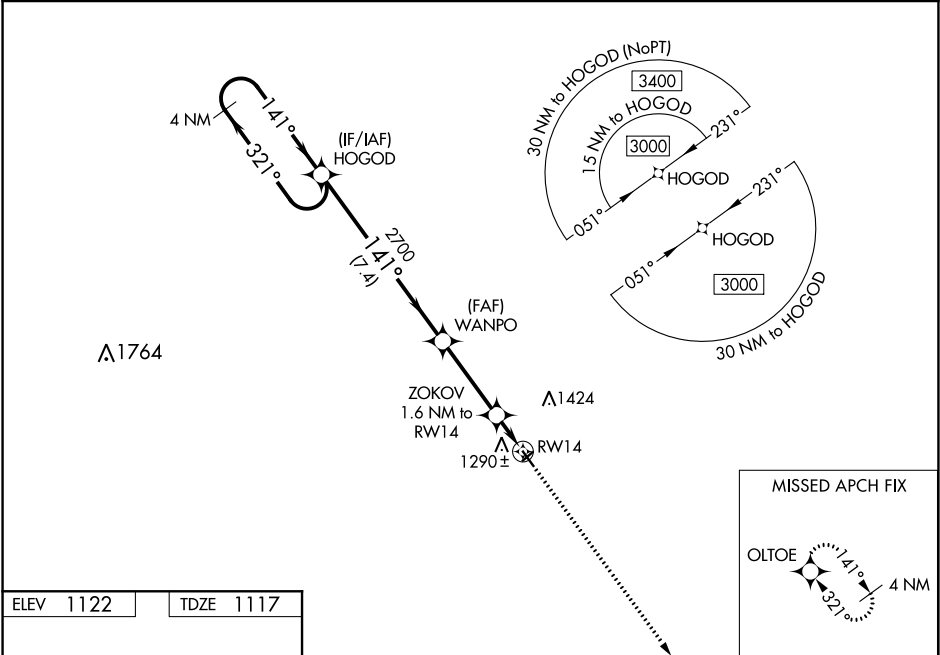
| | | |
|--|------------------------|---|
| WAAS CH 40237 W14A | APP CRS 141° | Rwy Idg TDZE 1117 Apt Elev 1122 |
|--|------------------------|---|

RNAV (GPS) RWY 14
WEBSTER CITY MUNI (EBS)

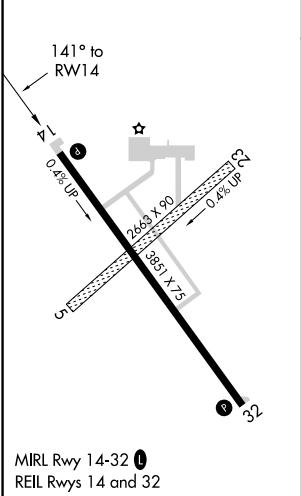
⚠ Baro-VNAV NA when using Clarion altimeter setting. For uncompensated Baro-VNAV systems, LNAV/VNAV NA below -17°C (2°F) or above 54°C (130°F). DME/DME RNP-0.3 NA. When local altimeter setting not received, use Clarion altimeter setting and increase all DAs 49 feet, and all MDA 60 feet; increase LNAV/VNAV all Cats visibility 1/8 mile. Helicopter visibility reduction below 3/4 SM NA.

MISSED APPROACH: Climb to 3000 direct OLT OE and hold.

| | | |
|--------------------------|--|---------------------------------|
| AWOS-3 127.825 | MINNEAPOLIS CENTER 134.0 288.3 | UNICOM 122.8 (CTAF) 0 |
|--------------------------|--|---------------------------------|



| | |
|------------------|------------------|
| ELEV 1122 | TDZE 1117 |
|------------------|------------------|



| | | | | | | | |
|----------------------------|------------|-----------------|----|--|--|--------|--------|
| 4 NM Holding Pattern HOGOD | | | | VGSI and RNAV glidepath not coincident (VGSI Angle 3.25/TCH 25). | | 3000 | OLT OE |
| 3000 ← 321° | | | | 141° → | | 2700 | |
| GP 3.00° | | | | TCH 40 | | 2700 | |
| | | | | 7.4 NM | | 3.3 NM | 1.6 NM |
| CATEGORY | A | B | C | D | | | |
| LPV DA | 1367-1 | 250 (300-1) | NA | | | | |
| LNAV/VNAV DA | 1463-1 1/4 | 346 (400-1 1/4) | NA | | | | |
| LNAV MDA | 1540-1 | 423 (500-1) | NA | | | | |
| CIRCLING | 1600-1 | 478 (500-1) | NA | | | | |

NC-3, 31 DEC 2020 to 28 JAN 2021

NC-3, 31 DEC 2020 to 28 JAN 2021