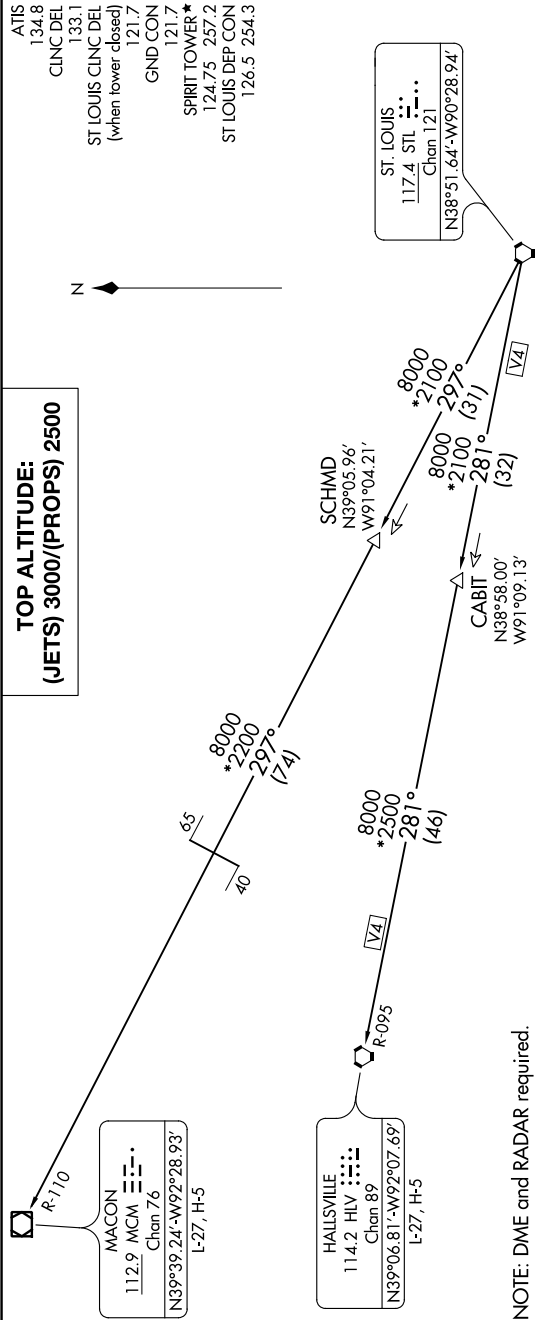


(OZARK7.STL) 20086  
OZARK SEVEN DEPARTURE

AL-5400 (FAA)

SPIRIT OF ST LOUIS (STLS)  
ST. LOUIS, MISSOURI



NOTE: DME and RADAR required.

DEPARTURE ROUTE DESCRIPTION

Climb on assigned heading for vector to appropriate route.

JETS: Maintain 3000 or assigned altitude, thence . . .  
PROPS: Maintain 2500 or assigned altitude, thence . . .  
. . . (transition). Expect filed altitude 10 minutes after departure.

HALLSVILLE TRANSITION [OZARK7.HLV]: From over STL VORTAC on STL R-281 to CABIT, then on STL R-281 and HLV R-095 to HLV VORTAC.  
MACON TRANSITION [OZARK7.MCM]: From over STL VORTAC on STL R-297 to SCHMD, then on STL R-297 and MCM R-110 to MCM VOR/DME.

TAKEOFF MINIMUMS  
Rwys 8L, 26R: Standard.  
Rwy 8R: 200-1¼ or standard with minimum climb of 238' per NM to 700.  
Rwy 26L: 300-2 or standard with minimum climb of 231' per NM to 900.

NOTE: Chart not to scale.

OZARK SEVEN DEPARTURE  
(OZARK7.STL) 120CT17

ST. LOUIS, MISSOURI  
SPIRIT OF ST LOUIS (STLS)