


LOC I-FZU <b>111.1</b>	APP CRS <b>259°</b>	Rwy Idg TDZE <b>462</b> Apt Elev <b>463</b>
---------------------------	------------------------	---

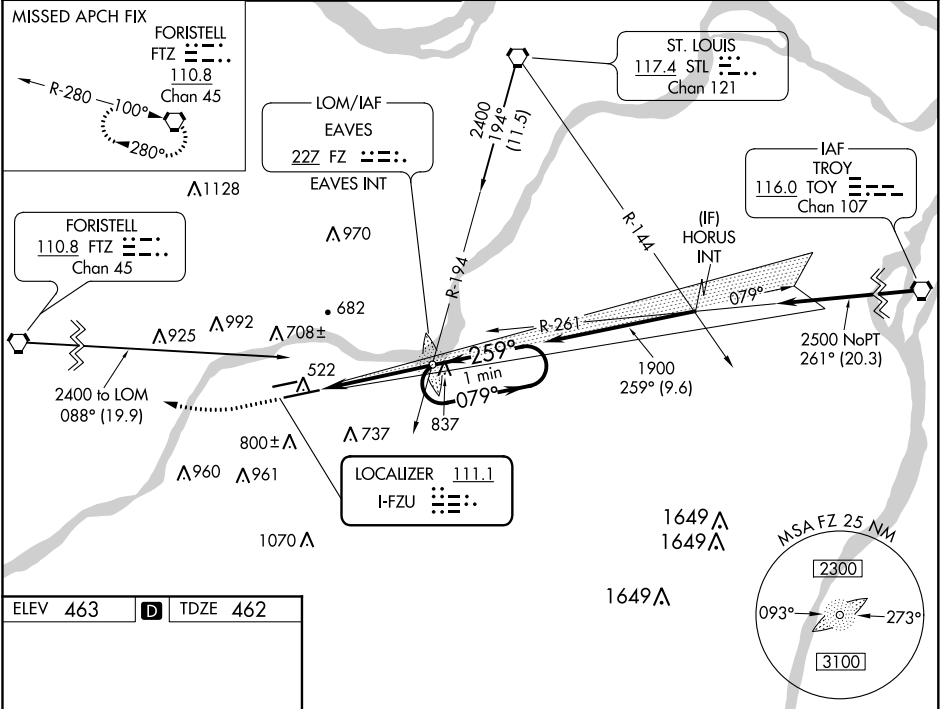
ILS or LOC RWY 26L  
SPIRIT OF ST LOUIS (SUS)

⚠ When local altimeter setting not received, use St Louis Lambert Intl altimeter setting and increase all DA to 719 and all MDA 60 feet, increase S-LOC Cat C and D visibility 1/8 mile. For inop MALSR, increase S-LOC 26L Cats C/D visibility to 1 7/8 miles. For inop MALSR when using St Louis Lambert Intl altimeter setting, increase S-LOC 26L Cats C/D visibility to 2 miles. \*RVR 1800 authorized with the use of FD or AP or HUD to DA (NA when using St Louis Lambert Intl altimeter setting).

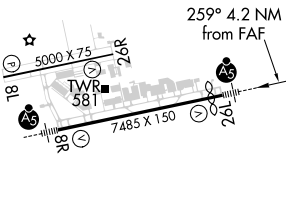
MALSR  


MISSED APPROACH:  
Climb to 2400 then right turn direct FTZ VORTAC and hold.

ATIS <b>134.8</b>	ST. LOUIS APP CON <b>126.5 254.3</b>	SPIRIT TOWER* <b>124.75 (CTAF) 0 257.2</b>	GND CON <b>121.7</b>	CLNC DEL <b>133.1</b>	ST. LOUIS CLNC DEL <b>121.7</b> (when tower closed)	UNICOM <b>122.95</b>
----------------------	---	---	-------------------------	--------------------------	---	-------------------------




ELEV **463** D TDZE **462**



HIRL Rwy 8R-26L  
MIRL Rwy 8L-26R

FAF to MAP 4.2 NM

Knots	60	90	120	150	180
Min:Sec	4:12	2:48	2:06	1:41	1:24

<div>2400 ↑ FTZ </div>			
<div>FZ LOM EAVES INT 1883 079° → 2000 ← 259° 1900 GS 3.00° TCH 55</div>			
CATEGORY	A	B	D
S-ILS 26L *	662/24 200 (200-1/2)		
S-LOC 26L	1140/24 678 (700-1/2)	1140-1 1/2 678 (700-1/2)	
CIRCLING	1140-1 677 (700-1)	1140-2 677 (700-2)	1140-2 1/4 677 (700-2 1/4)

NC-3, 31 DEC 2020 to 28 JAN 2021

NC-3, 31 DEC 2020 to 28 JAN 2021