


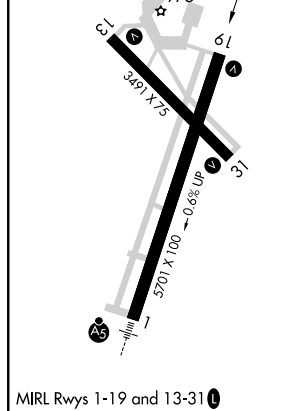
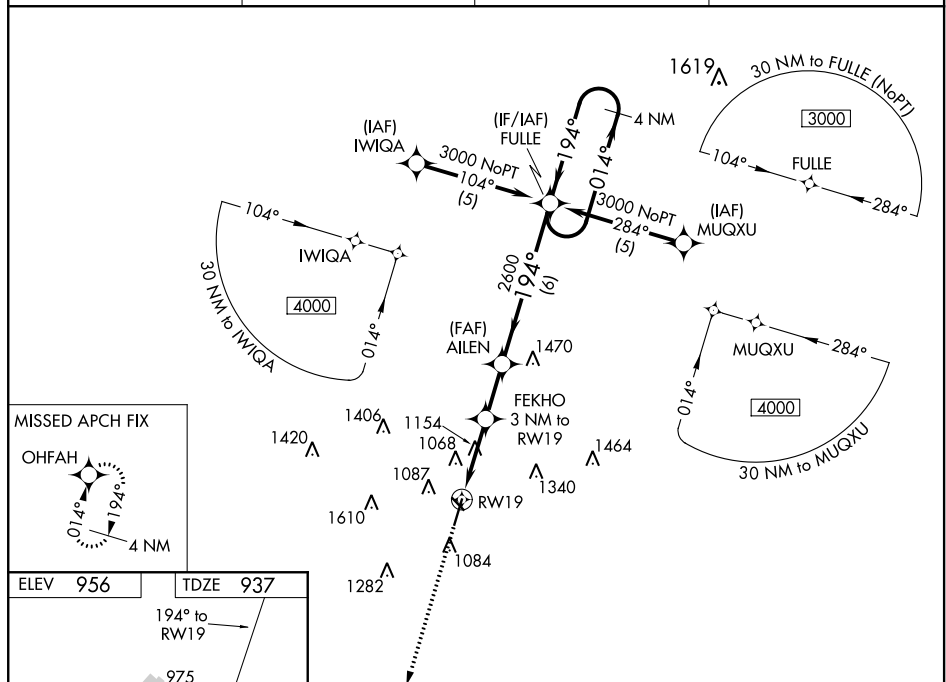


RNAV (GPS) RWY 19
AMES MUNI (AMW)

Baro-VNAV and VDP NA when using Ankeny altimeter setting. For uncompensated Baro-VNAV systems, LNAV/VNAV NA below -16°C or above 54°C. Rwy 19 helicopter visibility reduction below ¼ SM NA. When local altimeter setting not received, use Ankeny altimeter setting and increase all DA 49 feet and LNAV/VNAV all Cts visibility ¼ mile, increase all MDA 60 feet and LNAV/Cat C visibility ¼ mile.

MISSED APPROACH: Climb to 4000
direct OHFAH and hold.

ASOS 132.025	DES MOINES APP CON 123.9 307.15	CLNC DEL 126.0 	UNICOM 122.7 (CTAF)  
------------------------	---	--	---



VGS1 and RNAV glidepath not coincident
(VGS1 Angle 4.00/TCH 41).

4000 OHPAH

* LNAV only.

FEKHO 3 NM to RW19

1.1 NM 1.9 NM 2.1 NM 6 NM

1920*

2600

194°

2600

4 NM Holding Pattern

014°

3000

GP 3.00° TCH 48

CATEGORY	A	B	C	D
LPV DA	1187-1	250 (300-1)		NA
LNAV/VNAV DA	1352-1½	415 (400-1½)		NA
LNAV MDA	1420-1	483 (500-1)	1420-1¾ 483 (500-1¾)	NA

NC-3, 31 DEC 2020 to 28 JAN 2021

NC-3, 31 DEC 2020 to 28 JAN 2021