

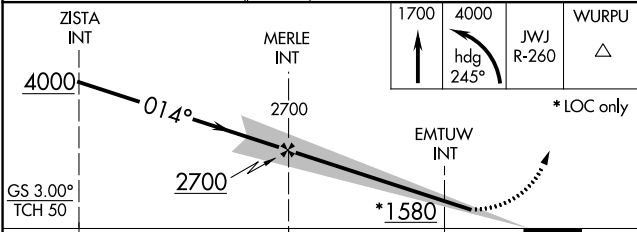
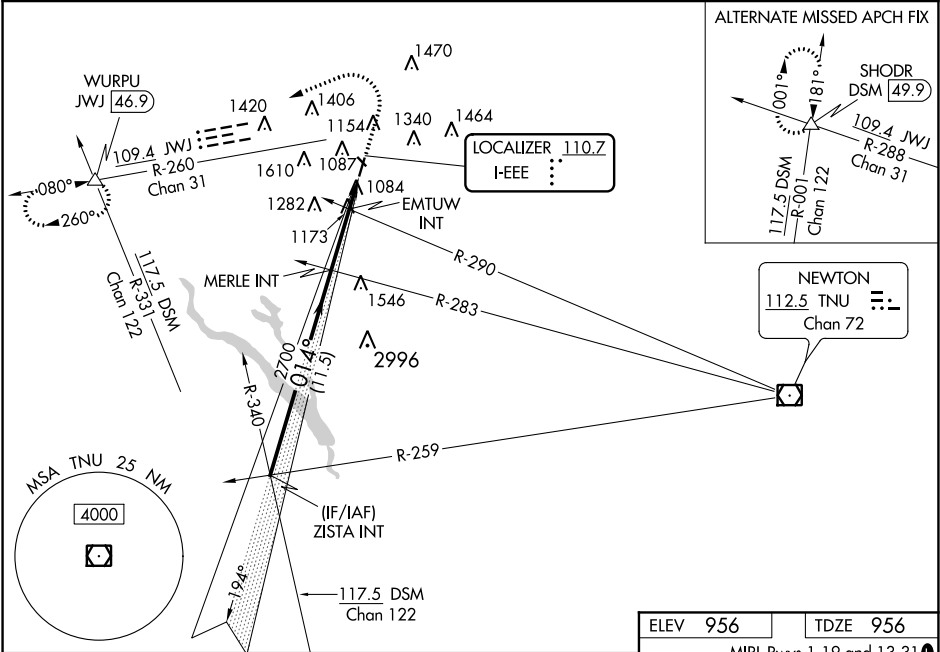
LOC I-EEE	APP CRS	Rwy Idg	5701
110.7	014°	TDZE	956
		Apt Elev	956



ILS or LOC RWY 1  
AMES MUNI (AMW)

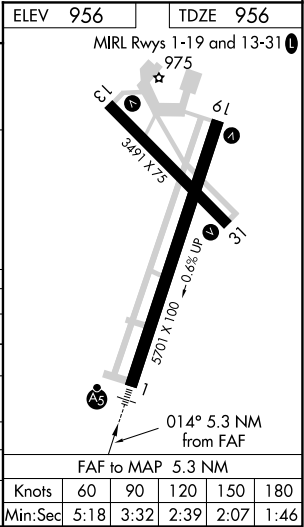
MALSRL

MISSED APPROACH: Climb to 1700 then climbing left turn to 4000 on heading 245° and JWJ VOR/DME R-260 to WURPU INT/JWJ 46.9 DME and hold.

ASOS 132.025	DES MOINES APP CON 123.9 307.15	CLNC DEL 126.0	UNICOM 122.7 (CTAF)  
-----------------	------------------------------------	-------------------	--



CATEGORY	A	B	C	D
S-ILS 1	1206-1/2		250 (300-1/2)	
S-LOC 1	1580-1/2	624 (700-1/2)	1580-1 3/8	624 (700-1 3/8)
 CIRCLING	1580-1	624 (700-1)	1640-2 684 (700-2)	1960-3 1004 (1100-3)
EMTUW FIX MINIMUMS (DUAL VOR RECEIVERS REQUIRED)				
S-LOC 1	1440-1/2	484 (500-1/2)	1440-1	484 (500-1)
 CIRCLING	1440-1 484 (500-1)	1460-1 504 (600-1)	1640-2 684 (700-2)	1960-3 1004 (1100-3)



NC-3, 31 DEC 2020 to 28 JAN 2021

NC-3, 31 DEC 2020 to 28 JAN 2021