

WAAS CH 53499 W15A	APP CRS 147°	Rwy Idg 5535 TDZE 1158 Apt Elev 1160
--	------------------------	---

RNAV (GPS) RWY 15

WAYNESVILLE-ST ROBERT RGNI FORNEY FIELD (TBN)

RNP APCH.

T For uncompensated Baro-VNAV systems, LNAV/VNAV NA below -18°C or above 54°C.
A VDP and Baro-VNAV NA when using Rollo National altimeter setting. When local altimeter setting not received, use Rollo National altimeter setting and increase all LPV DA to 1427 and LNAV/VNAV DA to 1477; increase all MDAs 80 feet. Inop table does not apply.
 For inop ALS when using Rollo National altimeter setting increase LNAV Cat C/D visibility to 1½ SM. Circling NA west of Rwy 15-33. Inop table does not apply to LPV, LNAV/VNAV, all Cats, and LNAV Cats A/B minimums when using Rollo National altimeter setting.

MALS



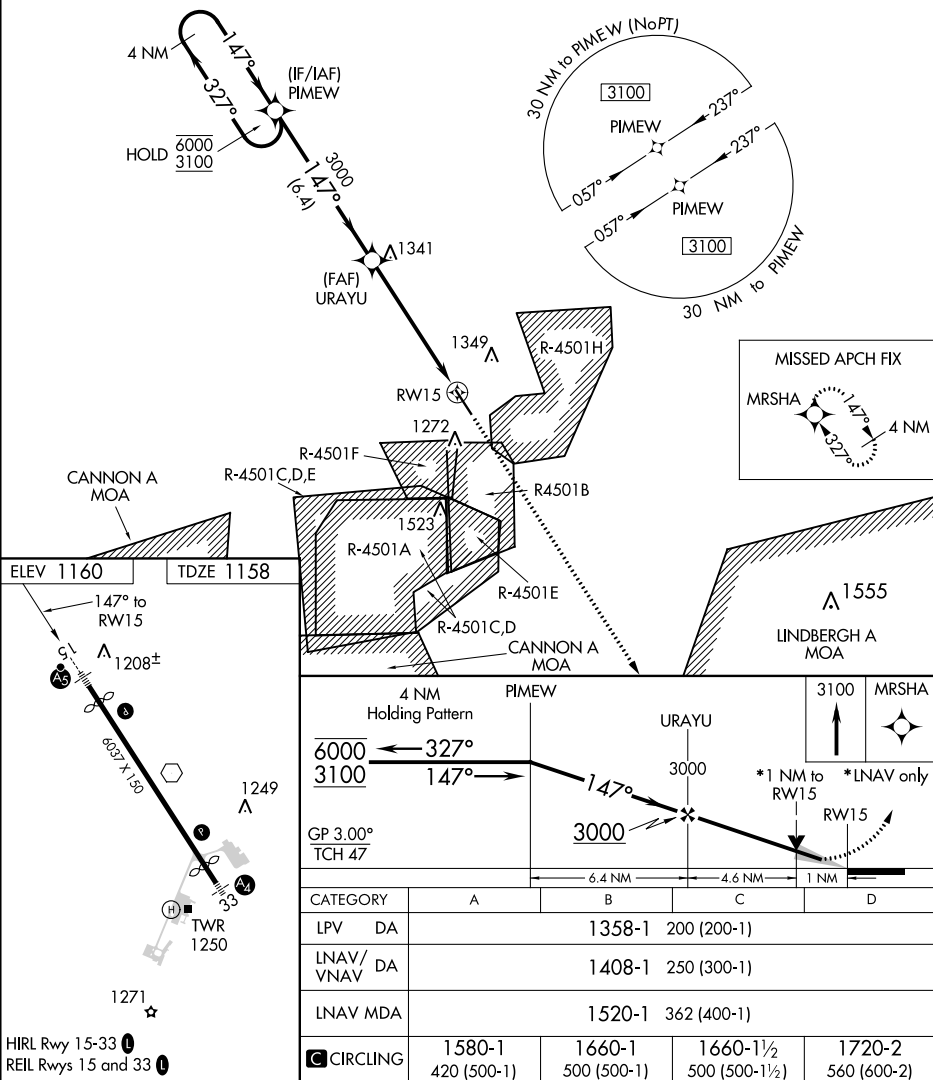
MISSED APPROACH.
Climb to 3100 direct
MRSMA and hold.

D-ATIS
118.7 229.4

KANSAS CITY CENTER
128.35 284.675

FORNEY TOWER ★
125.4 (CTAF) **L** 268.7

GND CON
123.75 256.8



FORT LEONARD WOOD, MISSOURI
Amdt 1 15AUG19

WAYNESVILLE-ST ROBERT RGNL FORNEY FIELD (TBN)
37°44'N-92°08'W **PNNAV (GPS) RWY 15**

RNAV (GPS) RWY 15