

LOC I-FOD	APP CRS	Rwy Idg	6547
109.1	063°	TDZE	1107
		Apt Elev	1157

ILS or LOC RWY 6

FORT DODGE RGNL (FOD)

▼

▲ NA

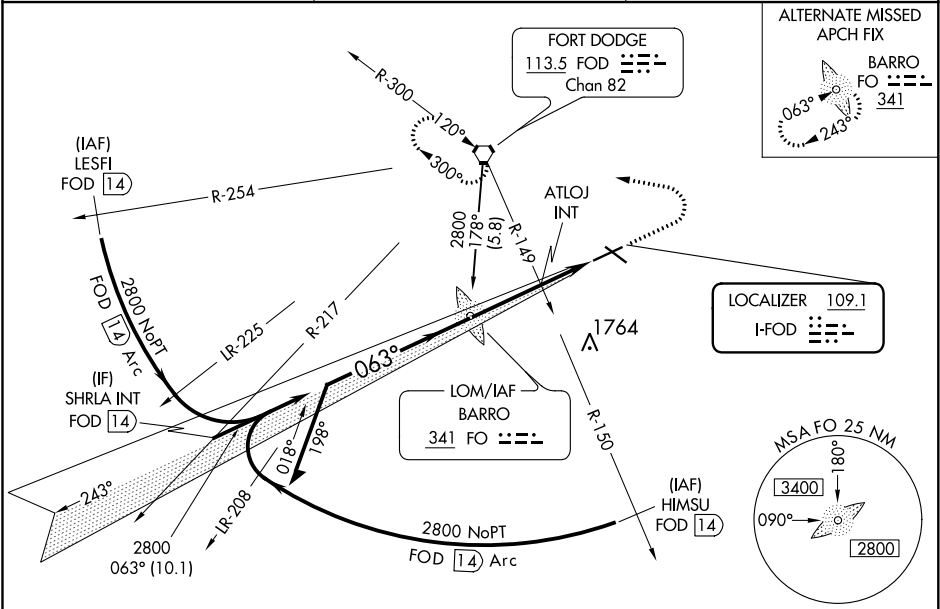
When local altimeter setting not received, use Webster City altimeter setting and increase all DA 42 feet and all MDA 60 feet, increase S-LOC and Circling visibility Cats B/C/D ¼ mile. For inoperative MALSR when using Webster City altimeter setting, increase S-ILS visibility all Cats to 1 mile.

MALSR

AS

MISSED APPROACH: Climb to 2800 then left turn direct FOD VORTAC and hold.

AWOS-3PT	MINNEAPOLIS CENTER	UNICOM
118.775	134.0 288.3	123.0 (CTAF) 1



<div><div><div>2800</div><div>↑</div></div><div><div>2800</div><div>↶</div></div><div><div>FOD</div><div>◡</div></div></div>					ELEV 1157		D TDZE 1107	
<div><div>Remain within 10 NM</div><div>2800</div><div>243°</div><div>BARRO FO LOM</div><div>2702</div><div>063°</div><div>GS 3.00° TCH 54</div><div>2800</div><div>ATLOJ INT</div><div>* 1820</div><div>2.8 NM</div><div>2.1 NM</div><div>* LOC only.</div></div>					<div><div>063° 4.9 NM from FAF</div><div>MIRL Rwy 12-30 1</div><div>REIL Rwys 12, 24 and 30 1</div><div>HIRL Rwy 6-24 1</div><div>FAF to MAP 4.9 NM</div><div><div>Knots</div><div>60 90 120 150 180</div></div><div><div>Min:Sec</div><div>4:54 3:16 2:27 1:58 1:38</div></div></div>			
CATEGORY	A	B	C	D				
S-ILS 6	1307-½ 200 (200-½)							
S-LOC 6	1820-½	713 (700-½)	1820-1½ 713 (700-1½)	1820-1¾ 713 (700-1¾)				
CIRCLING	1820-1	663 (700-1)	1820-2 663 (700-2)	1820-2¼ 663 (700-2¼)				
ATLOJ FIX MINIMUMS (DUAL VOR RECEIVERS REQUIRED)								
S-LOC 6	1400-½ 293 (300-½)			1400-¾ 293 (300-¾)				
CIRCLING	1560-1 403 (500-1)	1620-1 463 (500-1)	1620-1½ 463 (500-1½)	1720-2 563 (600-2)				