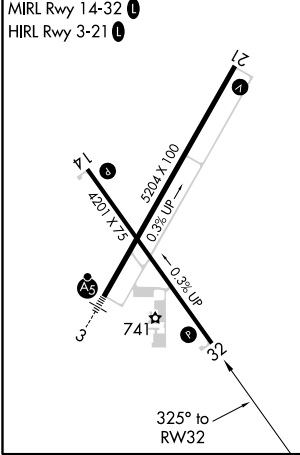
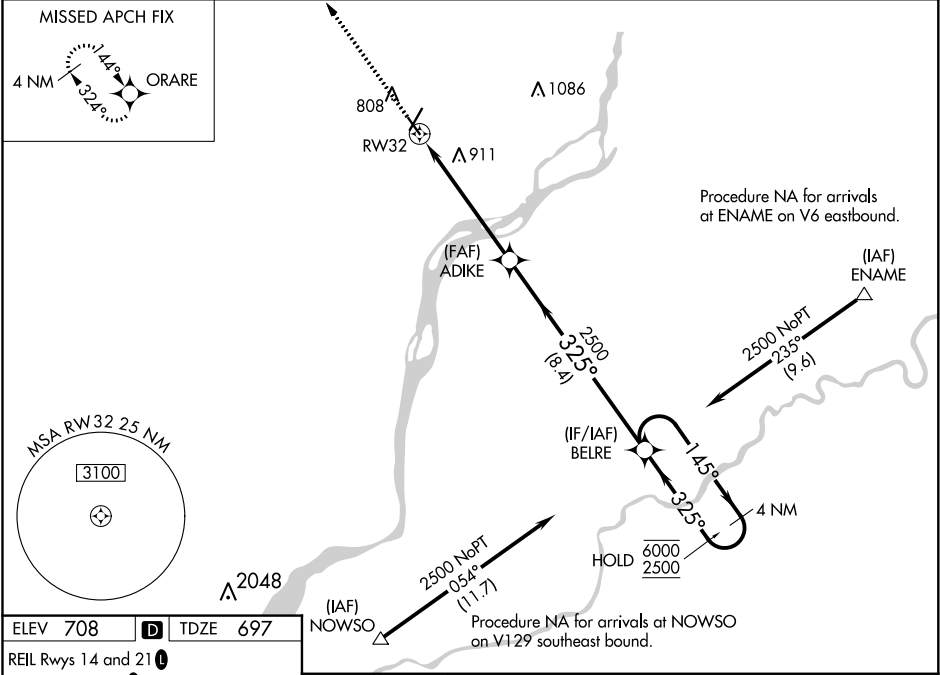


WAAS CH 77629 W32A	APP CRS 325°	Rwy Idg TDZE Apt Elev	4200 697 708
--	------------------------	-----------------------------	---

RNAV (GPS) RWY 32
CLINTON MUNI (CWI)

RNP APCH.	MISSED APPROACH: Climb to 2500 direct ORARE and hold.
<div>For uncompensated Baro-VNAV systems, LNAV/VNAV NA below -16°C or above 54°C.</div>	
<div>-35°C/-31°F</div>	

AWOS-3PT 125.525	QUAD CITY APP CON ★ 125.95 257.8	CLNC DEL 118.5 0	UNICOM 122.8 (CTAF)
----------------------------	--	----------------------------	-------------------------------



2500

↑

ORARE

ADIKE

2500

BELRE

4 NM Holding Pattern

145° → 6000

← 325° 2500

GP 3.00°

TCH 40

* LNAV only.

* 1.4 NM to RW32

RW32

1.4 NM

4.2 NM

8.4 NM

325°

2500

CATEGORY	A	B	C	D
LPV DA	947-1 250 (300-1)			NA
LNAV/VNAV DA	1205-1⅜ 508 (500-1⅜)			NA
LNAV MDA	1180-1 483 (500-1)	1180-1⅜ 483 (500-1⅜)		NA
CIRCLING	1180-1 472 (500-1)	1240-1 532 (600-1)	1240-1½ 532 (600-1½)	NA

NC-3, 31 DEC 2020 to 28 JAN 2021

NC-3, 31 DEC 2020 to 28 JAN 2021