

WAAS CH 97304 W08A	APP CRS 084°	Rwy Idg TDZE 672 Apt Elev 672
--	------------------------	---

RNAV (GPS) RWY 8

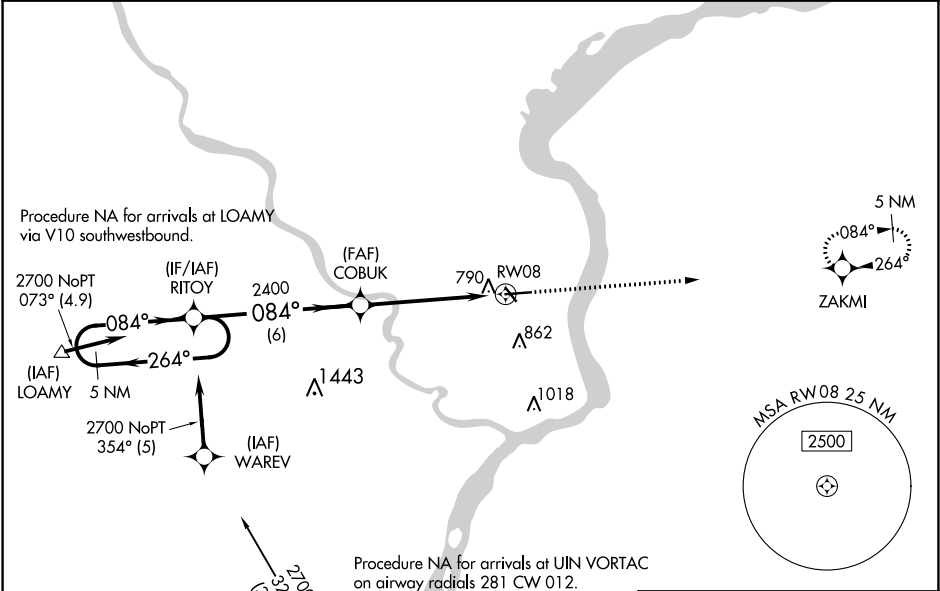
KEOKUK MUNI (EOK)

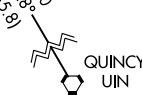
▼

DME/DME RNP -0.3 NA. For uncompensated Baro-VNAV systems, LNAV/VNAV NA below -16°C (4°F) or above 54°C (130°F). When local altimeter setting not received, use Burlington altimeter setting and increase all DA 59 feet and all MDA 60 feet, increase LNAV and Circling Cat C visibility ¼ mile. VDP and Baro-VNAV NA when using Burlington altimeter setting. Circling to Rwy 32 NA at night.

MISSED APPROACH: Climb to 2700 direct ZAKMI and hold.

AWOS-3 118.375	KANSAS CITY CENTER 126.225 317.775	UNICOM 122.8 (CTAF) 1
--------------------------	--	---------------------------------





QUINCY
UIN

ELEV 672

TDZE 672

5 NM
Holding Pattern

2700 ← 264°
084° →

GP 3.00°
TCH 40

RITOY

COBUK

2700 ↑

ZAKMI

084°

2400

* 1 NM to RW08

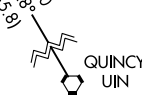
* LNAV only

6 NM

4.2 NM

1 NM

CATEGORY	A	B	C	D
LPV DA	921-1	250 (300-1)		NA
LNAV/VNAV DA	1060-1½	388 (400-1½)		NA
LNAV MDA	1040-1	368 (400-1)		NA
CIRCLING	1180-1	508 (600-1)	1220-1½ 548 (600-1½)	NA



QUINCY
UIN

ELEV 672

TDZE 672

5 NM
Holding Pattern

2700 ← 264°
084° →

GP 3.00°
TCH 40

RITOY

COBUK

2700 ↑

ZAKMI

084°

2400

* 1 NM to RW08

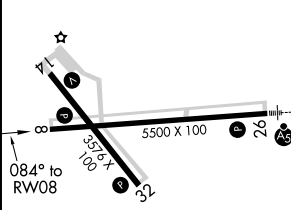
* LNAV only

6 NM

4.2 NM

1 NM

CATEGORY	A	B	C	D
LPV DA	921-1	250 (300-1)		NA
LNAV/VNAV DA	1060-1½	388 (400-1½)		NA
LNAV MDA	1040-1	368 (400-1)		NA
CIRCLING	1180-1	508 (600-1)	1220-1½ 548 (600-1½)	NA



REIL Rwy 8, 14 and 32 L

MIRL Rwy 8-26 and 14-32 L