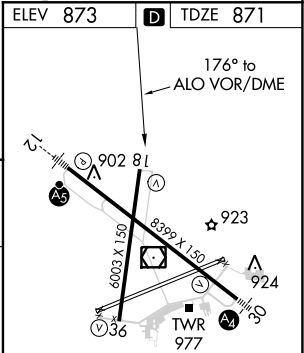
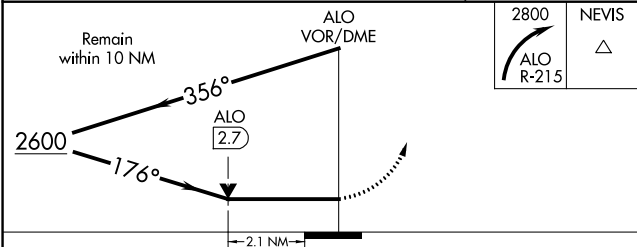
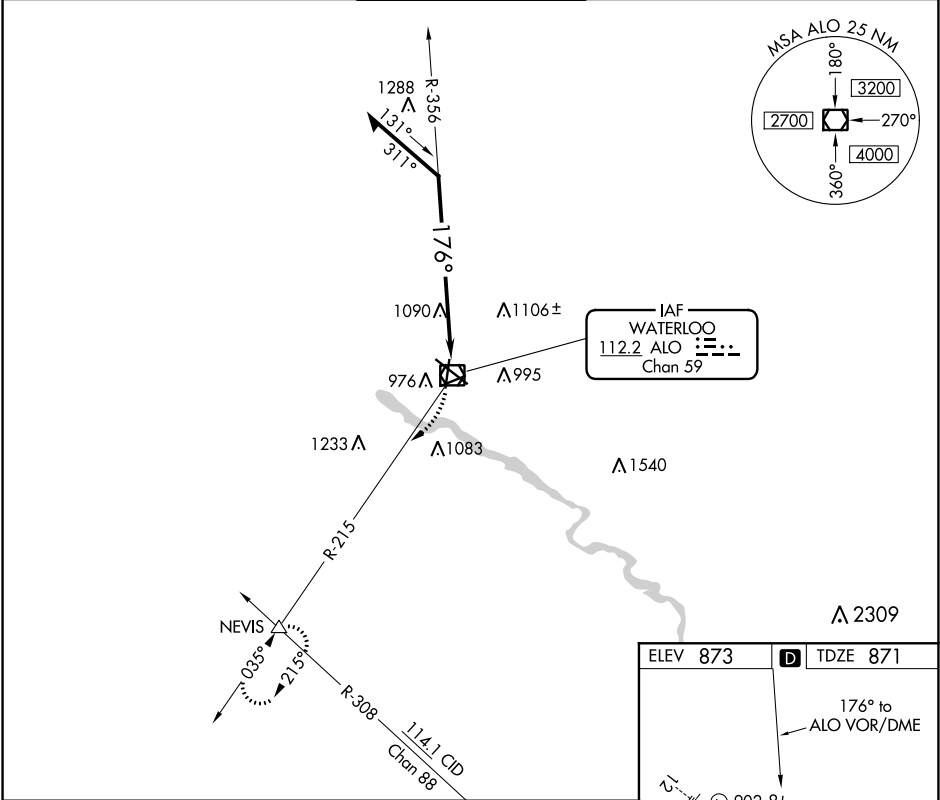


VOR/DME ALO	APP CRS	Rwy Idg	6003
112.2	176°	TDZE	871
Chan 59		Apt Elev	873

VOR RWY 18
WATERLOO RGNL (ALO)

<p>⚠ Rwy 18 helicopter visibility reduction below 3/4 SM NA.</p>	<p>MISSED APPROACH: Climbing right turn to 2800 on ALO VOR/DME R-215 to NEVIS INT and hold.</p>
---	---

ATIS 120.65	WATERLOO APP CON ★ 118.9 251.15	WATERLOO TOWER ★ 125.075 (CTAF) 0 257.8	GND CON 121.9 269.1	UNICOM 122.95
----------------	------------------------------------	--	------------------------	------------------



CATEGORY	A	B	C	D
S-18	1600-1 729 (800-1)		1600-2 729 (800-2)	
CIRCLING	1600-1 727 (800-1)		1600-2 727 (800-2)	1600-2 1/4 727 (800-2 1/4)

HIRL Rwy 12-30
MIRL Rwy 6-24
MIRL Rwy 18-36
REIL Rws 6, 18, 24, and 36