

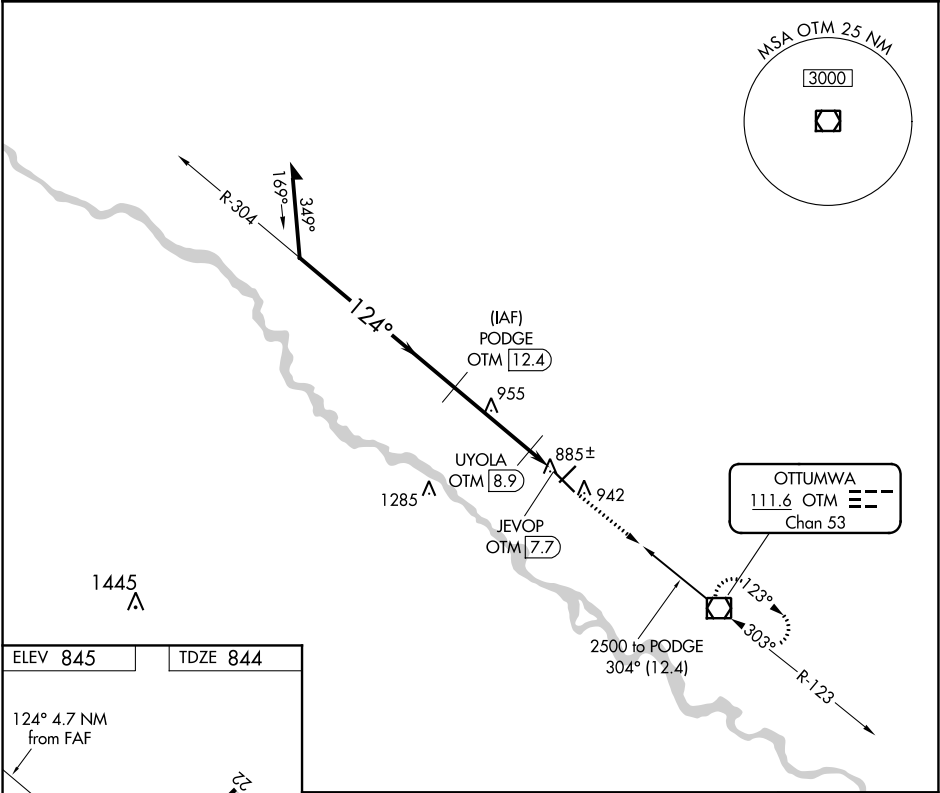
VOR/DME OTM 111.6 Chan 53	APP CRS 124°	Rwy Idg 5885 TDZE 844 Apt Elev 845
---	------------------------	---

VOR/DME RWY 13
OTTUMWA RGNL (OTM)

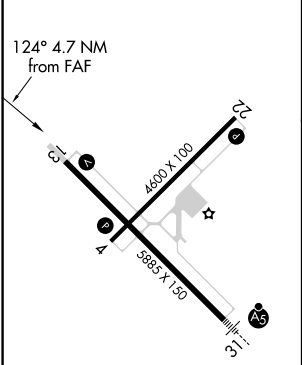
⚠ When local altimeter setting not received, use Oskaloosa altimeter setting and increase all MDA 20 feet.

MISSED APPROACH: Climb to 2500 direct OTM VOR/DME and hold.

ASOS 124.175	CHICAGO CENTER 118.15 335.575	UNICOM 123.0 (CTAF) 0
------------------------	---	--



ELEV 845	TDZE 844
----------	----------



Remain within 10 NM

PODGE OTM 12.4

2500

304°

124°

2400

3.04° ≥ TCH 41

UYOLA OTM 8.9

JEVOP OTM 7.7

*1280 when using Oskaloosa altimeter setting

*1260

3.5 NM

1.2 NM

2500 OTM

CATEGORY	A	B	C	D
S-13	1140-1	296 (300-1)	1140-7/8 296 (300-7/8)	NA
CIRCLING	1260-1 415 (500-1)	1300-1 455 (500-1)	1300-1½ 455 (500-1½)	NA

REIL Rwy 13
REIL Rwys 4 and 22 **0**
HIRL Rwys 4-22 and 13-31 **0**