

WAAS CH 93611 W31A	APP CRS 312°	Rwy Idg 5885 TDZE 841 Apt Elev 845
--	------------------------	---

RNAV (GPS) RWY 31
OTTUMWA RGNL (OTM)

V For uncompensated Baro-VNAV systems, procedure NA below -16°C (49°F) or above 54°C (130°F). DME/DME RNP-0.3 NA. Baro-VNAV and VDP NA when using Fairchild altimeter setting. When local altimeter setting not received, use Fairchild altimeter setting and increase all DA 56 feet and all MDA 60 feet. Increase LNAV/VNAV all Cats and LNAV Cat C ¼ mile. For inoperative MALSR when using Fairchild altimeter setting, increase LPV all Cats visibility to 1 mile.

MALSR

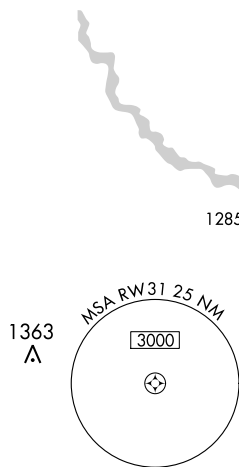


MISSED APPROACH:
Climb to 2800 direct
JODUN and hold.

ASOS
124.175

CHICAGO CENTER
118.15 335.575

UNICOM
123.0 (CTAF) **L**



RW31 942

(FAF)
WISON

Procedure NA for arrivals at
VOYUG via V434 eastbound.

(IAF)
VOYUG

3000
222°
(7.9)

Procedure NA for arrivals at ZEDGU via V206 southbound

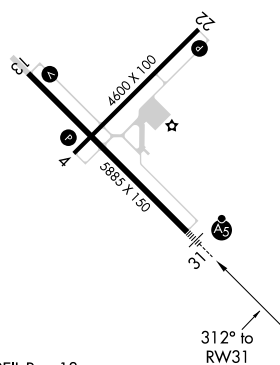
(IAF)
ZEDGU 

USOYE

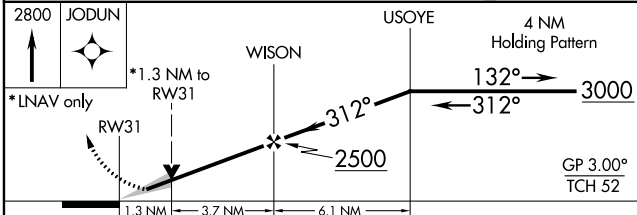
NM

ELEV 845

TDZE 841



REIL Rwy 13

REIL Rwys 4 and 22 **L**HIRL Rwy 4-22 and 13-31 **L**

CATEGORY	A	B	C	D
LPV DA	1091- $\frac{1}{2}$ 250 (300- $\frac{1}{2}$)			NA
LNAV/ VNAV DA	1192- $\frac{3}{4}$ 351 (400- $\frac{3}{4}$)			NA
LNAV MDA	1300- $\frac{1}{2}$ 459 (500- $\frac{1}{2}$)		1300- $\frac{3}{4}$ 459 (500- $\frac{3}{4}$)	NA
CIRCLING	1300-1 455 (500-1)		1300-1 $\frac{1}{2}$ 455 (500-1 $\frac{1}{2}$)	NA

OTTUMWA, IOWA
Orig 12MAR09

41°06'N-92°27'W

OTTUMWA RGNL (OTM)
RNAV (GPS) RWY 31