

WAAS CH 61315 W14A	APP CRS 137°	Rwy Idg TDZE 292 Apt Elev 294	5001
--	------------------------	---	-------------

RNAV (GPS) RWY 14

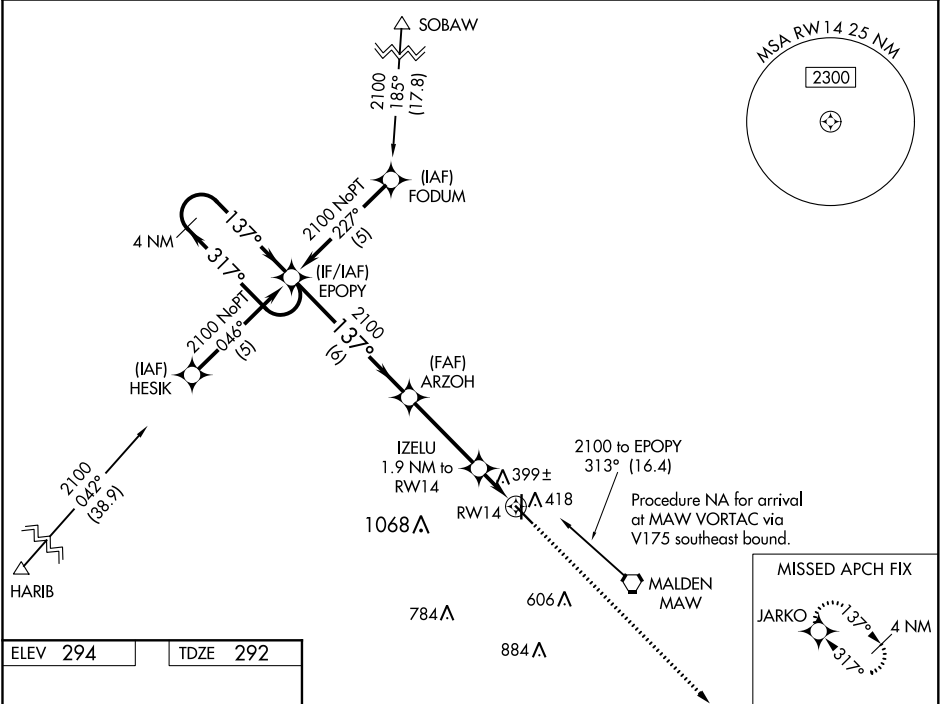
MALDEN RGNL (MAW)

NA

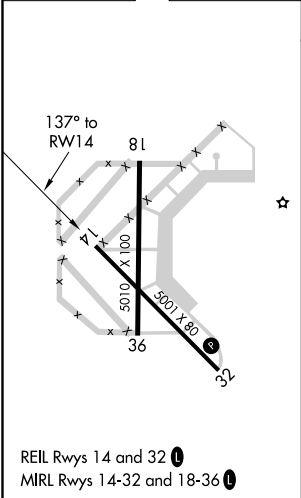
DME/DME RNP-0.3 NA. When local altimeter setting not received, use Poplar Bluff altimeter setting and increase all DA 50 feet, all MDA 60 feet, LNAV/VNAV all Cats and LNAV Cat C visibilities ¼ mile. For uncompensated Baro-VNAV systems, LNAV/VNAV NA below -15°C (5°F) or above 54°C (130°F). Baro-VNAV and VDP NA when using Poplar Bluff altimeter setting.

MISSED APPROACH:
Climb to 2100 direct JARKO and hold.

AWOS-3PT 119.825	MEMPHIS CENTER 133.65 292.15	GCO 135.075	UNICOM 122.8 (CTAF)
----------------------------	--	-----------------------	-------------------------------



ELEV 294	TDZE 292
----------	----------



4 NM Holding Pattern				2100	JARKO
GP 3.00° TCH 40				*LNAV only	
2100 ← 317° → 137° → 2100				*1 NM to RW14	
6 NM				RW14	
3.6 NM				*920	
0.9				1 NM	
CATEGORY	A	B	C	D	
LPV DA	542-1 250 (300-1)			NA	
LNAV/VNAV DA	698-1½ 406 (500-1½)			NA	
LNAV MDA	660-1 368 (400-1)			NA	
CIRCLING	720-1 426 (500-1)	820-1 526 (600-1)	820-1½ 526 (600-1½)	NA	

NC-3, 31 DEC 2020 to 28 JAN 2021

NC-3, 31 DEC 2020 to 28 JAN 2021