

LOC/DME I-JEF	APP CRS	Rwy ldg	6000
110.5	300°	TDZE	549
Chan 42		Apt Elev	549

ILS or LOC RWY 30

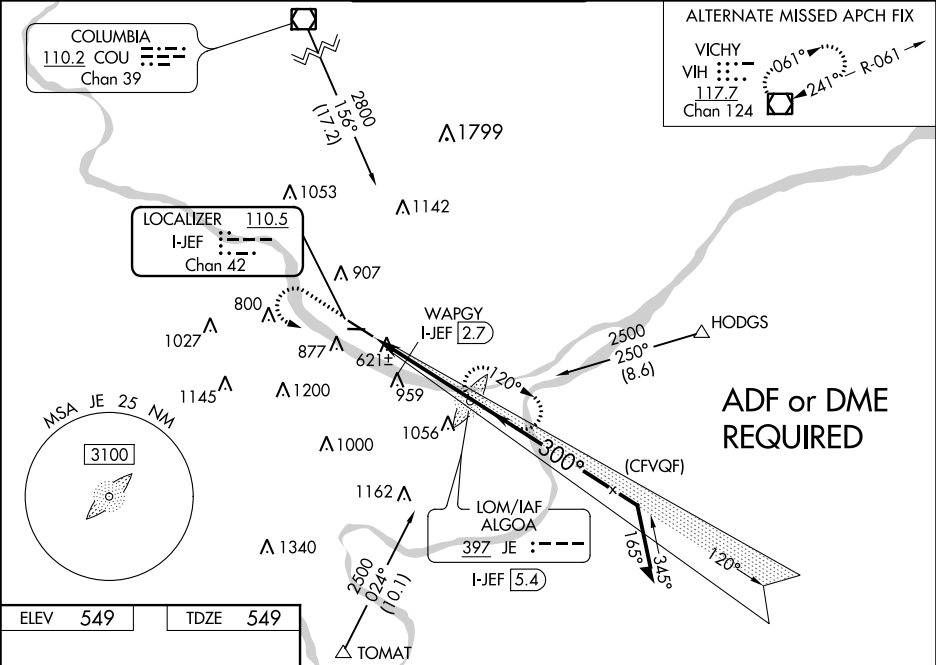
JEFFERSON CITY MEMORIAL (JEF)

**ADF required.** When local altimeter setting not received, use Columbia altimeter setting and increase all DA/MDA 80 feet, and increase S-LOC 30 visibility Cats C/D ¾ SM and increase S-LOC 30 WAPGY fix minimums visibility and Circling Cats A/B/C ¼ SM. VDP NA with Columbia altimeter setting. For inop ALS when using Columbia altimeter setting, increase S-ILS 30 visibility all Cats to ¾ SM and S-LOC 30 visibility Cats C/D to 1¾ SM and S-LOC 30 WAPGY fix minimums, visibility Cats C/D to 1½ SM. Circling Rwy 9 NA at night.

**MALSR**

**MISSED APPROACH:**  
Climb to 1500 then climbing left turn to 2500 direct ALGOA LOM and hold.

ASOS	MIZZU APP CON	JEFFERSON CITY TOWER★	GND CON	UNICOM
133.625	124.375 353.7	125.6 (CTAF) 0	121.7	122.95



ELEV 549	TDZE 549
----------	----------

**1500 2500 JE**

**JE LOM I-JEF 5.4**

VGSI and ILS glidepath not coincident (VGSI Angle 3.00/TCH 50).  
Remain within 10 NM

**120° 2500**

**300° 2000**

**1080\***

**1.5 NM 2.7 NM**

**300° 4.2 NM from FAF**

**TWR 595**

**615**

**3401 X 75**

**6000 X 100**

**30**

**AS**

CATEGORY	A	B	C	D
S-ILS 30		749-½	200 (200-½)	
S-LOC 30	1080-½	531 (600-½)	1080-1	531 (600-1)
CIRCLING	1320-1	771 (800-1)	1320-2¼ 771 (800-2¼)	1560-3 1011 (1100-3)
WAPGY FIX MINIMUMS				
S-LOC 30		880-½	331 (400-½)	
CIRCLING	1320-1	771 (800-1)	1320-2¼ 771 (800-2¼)	1560-3 1011 (1100-3)

HIRL Rwy 12-30 0

MIRL Rwy 9-27 0

REIL Rwy 9, 12, and 27 0