

APP CRS	Rwy Idg	9500
191°	TDZE	994
	Apt Elev	1026

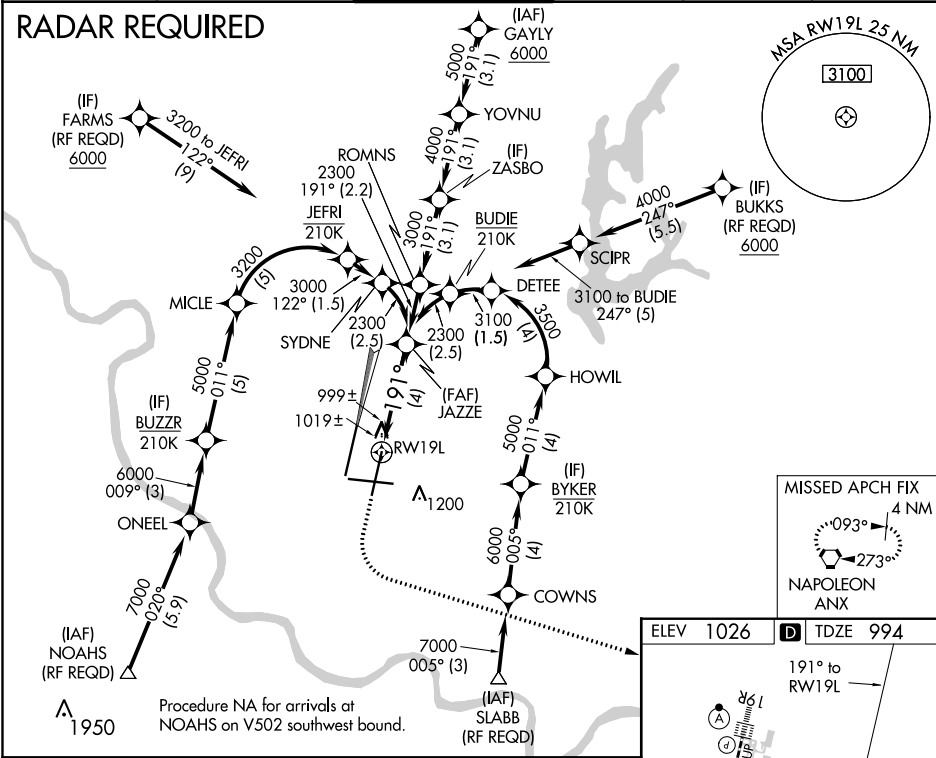
RNAV (RNP) Z RWY 19L
KANSAS CITY INTL (MCI)

⚠ For uncompensated Baro-VNAV systems, procedure NA below -20°C (-4°F) or above 54°C (130°F). For inop MALS, increase RNP 0.20 all Cats visibility to RVR 5000 and RNP 0.30 all Cats visibility to RVR 6000. GPS required. Simultaneous approach authorized with Rwy 19R, except for arrivals at NOAHS, FARMS, BUKKS, and SLABB. Use of FD or AP providing RNAV track guidance required during simultaneous operations.

MALS

MISSED APPROACH: Climb to 1500 then climbing left turn to 4000 direct ANX VORTAC and hold.

D-ATIS	KANSAS CITY APP CON	INTERNATIONAL TOWER	GND CON	CLNC DEL	CPDLC
128.375	120.95 318.1	128.2 254.25	121.8	135.7	



1500 4000 ANX

RW19L

JAZZE 2300

191°

2300

GP 3.00° TCH 59

See Planview for multiple IF locations.

4 NM

CATEGORY	A	B	C	D
RNP 0.20 DA		1306/26	312 (300-½)	
RNP 0.30 DA		1361/35	367 (400-¾)	

AUTHORIZATION REQUIRED

MISSED APCH FIX

093° 4 NM

273°

NAPOLEON ANX

ELEV 1026

TDZE 994

191° to RW19L

161

1066

10801 X 150

1075

9501 X 150

1164

1233

1R

27

0.3% UP

0.3% DOWN

HIRL all Rwys
TDZ/CL Rwys 1L, 1R, 19R and 19L

NC-3, 31 DEC 2020 to 28 JAN 2021

NC-3, 31 DEC 2020 to 28 JAN 2021