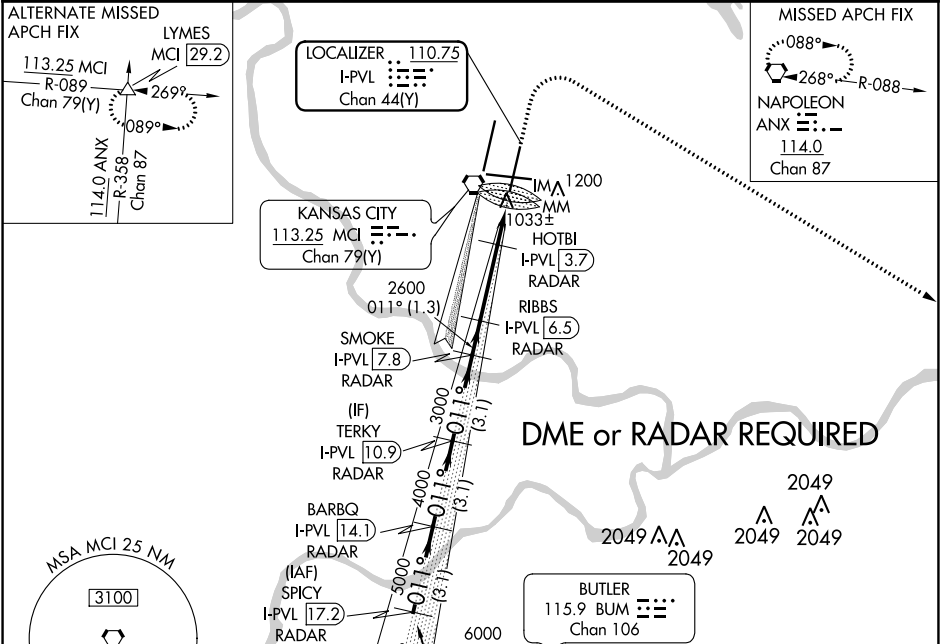


LOC/DME I-PVL 110.75 Chan 44 (Y)	APP CRS 011°	Rwy Idg TDZE 1017 Apt Elev 1026
--	------------------------	---

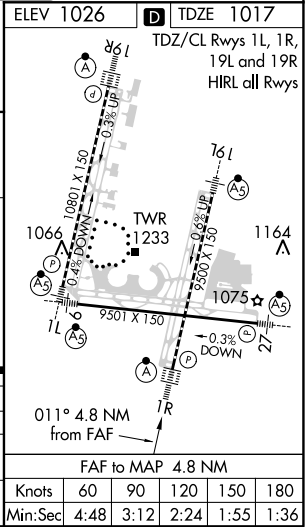
ILS or LOC RWY 1R
KANSAS CITY INTL (MCI)

Simultaneous approach authorized with Rwy 1L. DME or RADAR required. For inop ALSF, increase S-LOC 1R Cat C/D visibility to RVR 5000.	ALSF-2 	MISSED APPROACH: Climb to 1500 then climbing right turn to 4000 direct ANX VORTAC and hold.
--	------------	--

D-ATIS 128.375	KANSAS CITY APP CON 120.95 318.1	INTERNATIONAL TOWER 128.2 254.25	GND CON 121.8	CLNC DEL 135.7	CPDLC
--------------------------	--	--	-------------------------	--------------------------	-------



SPICY I-PVL [17.2] RADAR		VGSi and ILS glidepath not coincident (VGSi Angle 3.00/TCH 74).		1500	4000	ANX
BARBQ I-PVL [14.1] RADAR		SMOKE I-PVL [7.8] RADAR		*LOC only		
TERKY I-PVL [10.9] RADAR		RIBBS I-PVL [6.5] RADAR		*I-PVL 2.6		
HOTBI I-PVL [3.7] RADAR		HOTBI I-PVL [3.7] RADAR		*I-PVL 1.7		
GS 3.00° TCH 59		2600		IM		
CATEGORY		A		B		
S-ILS 1R		1217/18		200 (200-½)		
S-LOC 1R		1360/24		343 (400-½)		
CIRCLING		1540-1		514 (600-1)		
		1540-1½		514 (600-1½)		
		1580-2		554 (600-2)		



NC-3, 31 DEC 2020 to 28 JAN 2021

NC-3, 31 DEC 2020 to 28 JAN 2021