

LOC I-MCW

109.5

APP CRS

360°

Rwy Idg

6401

TDZE

1193

Apt Elev

1213

ILS or LOC RWY 36

MASON CITY MUNI (MCW)

ADF or DME required for procedure entry. ADF required.

▼

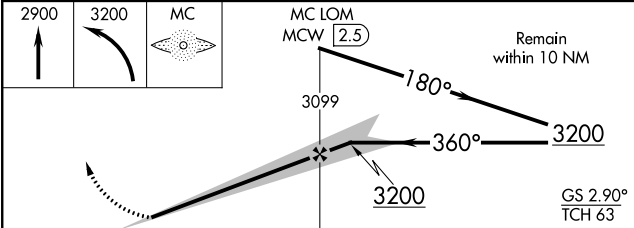
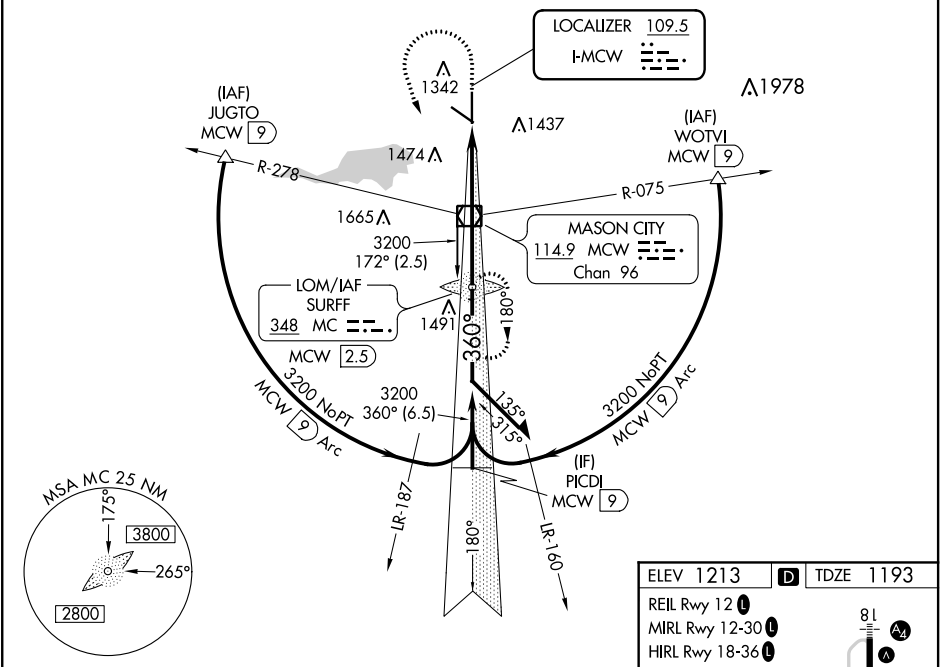
▲

For inoperative ALS, increase S-LOC 36 Cats C/D visibility to 1 1/4 SM. For inoperative ALS, when using Charles City altimeter setting, increase S-ILS 36 all Cats visibility to 3/4 SM and S-LOC 36 Cats C/D visibility to 2 SM. When local altimeter setting not received, use Charles City altimeter setting and increase DA 87 feet and all MDA 100 feet; increase S-LOC 36 Cat C/D visibility 1/4 SM and Circling Cat C/D visibility 1/4 SM.

MALSR

MISSED APPROACH: Climb to 2900 then climbing left turn to 3200 direct SURFF LOM/MCW VOR/DME 2.5 DME and hold.

ASOS 120.3	MINNEAPOLIS CENTER 127.3 257.675	UNICOM 123.0 (CTAF)
---------------	-------------------------------------	------------------------



CATEGORY	A	B	C	D
S-ILS 36	1393-1/2		200 (200-1/2)	
S-LOC 36	1800-1/2 607 (600-1/2)		1800-1 3/8 607 (600-1 3/8)	
CIRCLING	1800-1 587 (600-1)		1800-1 3/4 587 (600-1 3/4)	

