

WAAS CH <b>72933</b> <b>W32A</b>	APP CRS <b>319°</b>	Rwy Idg TDZE <b>1268</b> Apt Elev <b>1268</b>	<b>8000</b>
--	------------------------	---	-------------

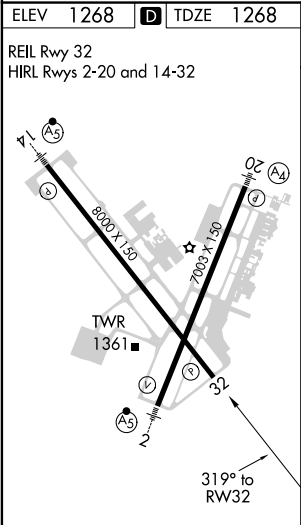
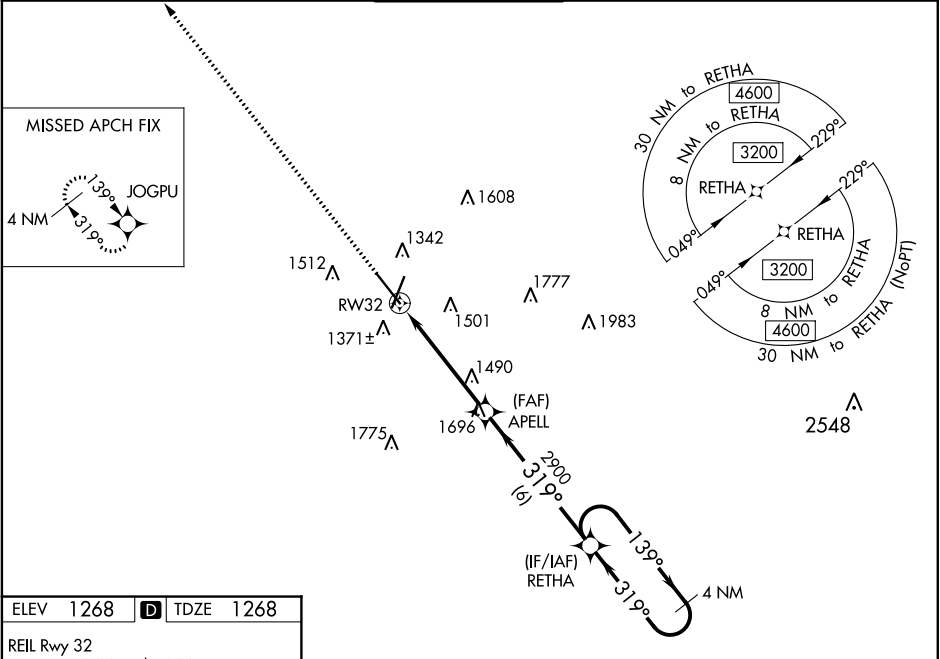
RNAV (GPS) RWY 32





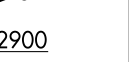

SPRINGFIELD-BRANSON NATIONAL (SGF)

**V** Baro-VNAV and VDP NA when using Monnett altimeter setting. For uncompensated Baro-VNAV systems, LNAV/VNAV NA below -16°C (4°F) or above 54°C (130°F). When local altimeter setting not received, use Monnett altimeter setting and increase all DA 90 feet and all MDA 100 feet; increase LPV all Cts visibility 1/8 mile, LNAV/VNAV all Cts 3/8 mile, LNAV Cts C and D 1/4 mile and Circling Cat C 1/4 mile and Cat D 1/2 mile. DME/DME RNP- 0.3 NA.

**MISSED APPROACH:**  
Climb to 3000 direct JOGPU and hold.

ATIS <b>135.125</b>	SPRINGFIELD APP CON <b>121.1 290.5</b>	SPRINGFIELD TOWER <b>119.9 257.8</b>	GND CON <b>121.9 251.15</b>	CLNC DEL <b>123.675</b>
------------------------	---	---	--------------------------------	----------------------------



3000	JOGPU	VGSI and RNAV glidepath not coincident (VGSI Angle 3.00/TCH 35).		4 NM Holding Pattern
		RETHA		
* LNAV only.		APELL	139°	3200
* 1.4 NM to RW32		2900	319°	← 319°
				GP 3.00° TCH 51
1.4 NM		3.6 NM	6 NM	
CATEGORY	A	B	C	D
LPV	DA	1518-1 250 (300-1)		
LNAV/ VNAV	DA	1660-1¼ 392 (400-1¼)		
LNAV	MDA	1740-1 472 (500-1)	1740-1⅜ 472 (500-1⅜)	
 CIRCLING	1760-1	1820-1	1820-1½	1920-2
	492 (500-1)	552 (600-1)	552 (600-1½)	652 (700-2)