

WAAS CH 72719 W22A	APP CRS 225°	Rwy Idg TDZE Apt Elev	5500 1117 1148
--	------------------------	-----------------------------	---

RNAV (GPS) RWY 22

ROLLA NATIONAL (VIH)

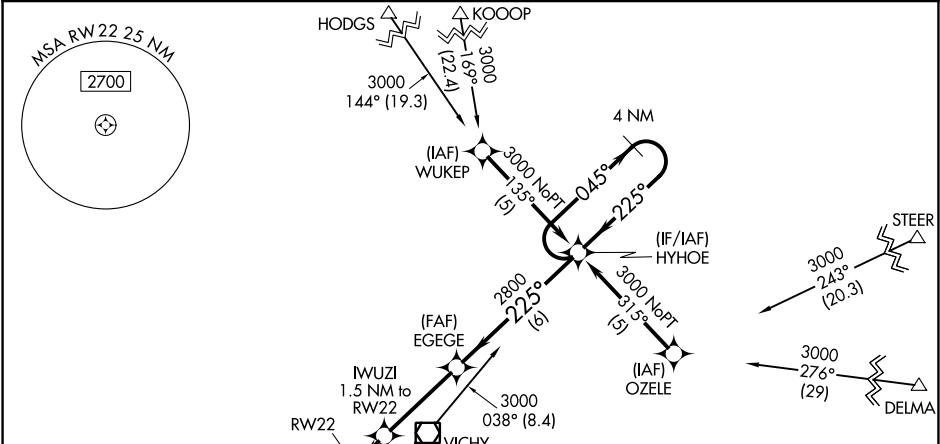
▼

▲ NA

For uncompensated Baro-VNAV systems, LNAV/VNAV NA below -17°C (2°F) or above 46°C (114°F).
DME/DME RNP-0.3 NA.

MISSED APPROACH:
Climb to 2800 direct GIKRE and hold.

ASOS 119.025	KANSAS CITY CENTER 128.35 284.675	UNICOM 123.0 (CTAF) 0
------------------------	---	---------------------------------



MISSED APCH FIX

4 NM
224°
044°
GIKRE

ELEV 1148

TDZE 1117

1548 ▲

2800

GIKRE

225° to RW22

0.5% UP

5500 X 100

5500 X 100

31

2800

GIKRE

2800

EGECE

1.5 NM to RW22

1640

2800

225°

045°

225°

3000

4 NM Holding Pattern

GP 3.00° TCH 52

CATEGORY	A	B	C	D
LPV DA	1367-3/4 250 (300-3/4)			
LNAV/VNAV DA	1529-1 1/2 412 (400-1 1/2)			
LNAV MDA	1520-1	403 (400-1)	1520-1 1/4	403 (400-1 1/4)
CIRCLING	1700-1	552 (600-1)	1700-1 1/2	1700-2
			552 (600-1 1/2)	552 (600-2)