

APCH CRS 190°	Rwy Idg 12,400 TDZE 871 Arpt Elev 871
------------------	---

AL-496 (USAF)

WHITEMAN AFB (KSZL)

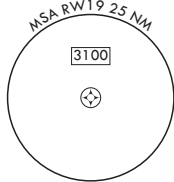
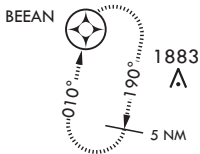
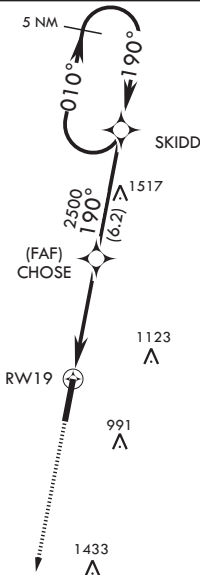
**T** \* When ALS inop, increase CAT AB RVR to 55 and vis to 1 mile, CAT CDE RVR to 60 and vis to 1 1/8 miles.  
\*\* Circling not authorized W of Rwy 1-19.

ALSF-1

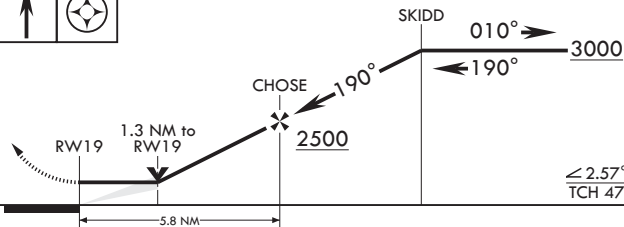
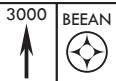
**MISSED APPROACH:** Climb to 3000 direct BEEAN and hold.

ATIS 118.725 239.025	APP CON 127.45 284.0	TOWER★ 132.4 318.8	GND CON 128.275 275.8	CLNC DEL 121.75 335.8	ASR
-------------------------	-------------------------	-----------------------	--------------------------	--------------------------	-----

DME/DME RNP 0.3 N/A



EMERG SAFE ALT 100 NM 4700



CATEGORY	A	B	C	D	E
LNAV MDA*	1260/24 389 (400-½)		1260/35	389	(400-¾)
<b>C</b> CIRCLING**	1300-1 429 (500-1)	1340-1 469 (500-1)	1340-1½ 469 (500-1½)	1460-2	589 (600-2)

