

HI-ILS or LOC Z RWY 1

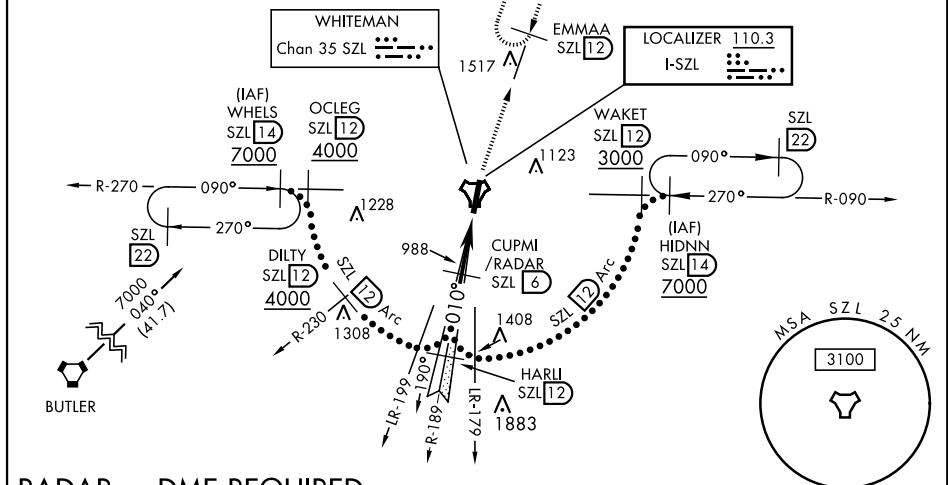
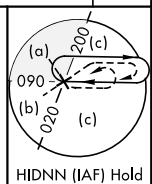
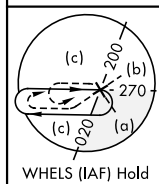
LOC I-SZL <u>110.3</u>	APCH CRS 010°	Rwy Idg 12,400 TDZE 837 Arpt Elev 871	JAL-496 [USAF]	WHITEMAN AFB (KSZL)
----------------------------------	-------------------------	--	----------------	---------------------

T * When ALS inop, increase CAT CDE RVR to 40 and vis to $\frac{3}{4}$ mile.
 ** When ALS inop, increase CAT CDE vis to $1\frac{1}{4}$ miles.
 *** Circling not authorized W of Rwy 1-19.

ALSF-1

MISSED APPROACH: Climb to 3000 via SZL TACAN R-018 to EMMAA and hold.

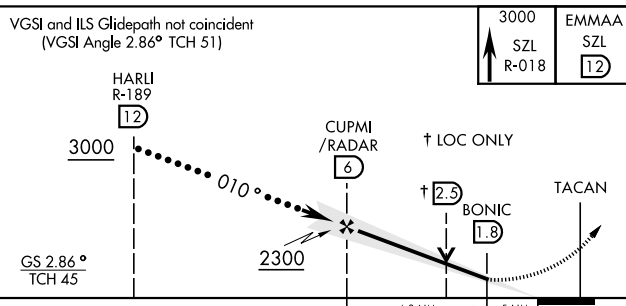
ATIS 118.725 239.025	WHITEMAN APP CON 127.45 284.0	WHITEMAN TOWER★ 132.4 318.8	GND CON 128.275 275.8	CLNC DEL 121.75 335.8	ASR
-------------------------	----------------------------------	--------------------------------	--------------------------	--------------------------	-----




RADAR or DME REQUIRED

EMERG SAFE ALT 100 NM 4700

VGSI and ILS Glidepath not coincident
(VGSI Angle 2.86° TCH 51)



CATEGORY	C	D	E
S-ILS 1*	1037/24	200	(200-½)
S-LOC 1**	1260/40	423	(400-¾)
 CIRCLING	1340-1½ 469 (500-1½)	1460-2	589 (600-2)

ELEV	871	TDZE	837
------	-----	------	-----

Diagram of HIRL Runway 1-19. The runway is oriented vertically. Key features include:

- Navigation Aids:** 1034 (star symbol), TWR 984 (square symbol), 1018 (triangle symbol), 932 (triangle symbol), 860 (triangle symbol), 962 (triangle symbol).
- Distance Markers:** 61, 12,400 x 200, 0.3% UP (with an upward arrow), 010° 4.7 NM from FAF.
- Other Symbols:** A circle with 'P' and a circle with 'A1' are shown near the top and bottom of the runway.

FAF to MAP 4.2 NM					
Knots	120	140	160	180	200
Min:Sec	2:06	1:48	1:35	1:24	1:16

NOB NOSTER, MISSOURI

38°43'N-93°33'W

WHITEMAN AFB (KSZL)

Amdt 1 10OCT19

HI-ILS or LOC Z RWY 1