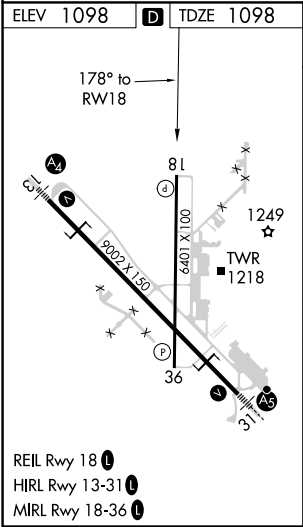
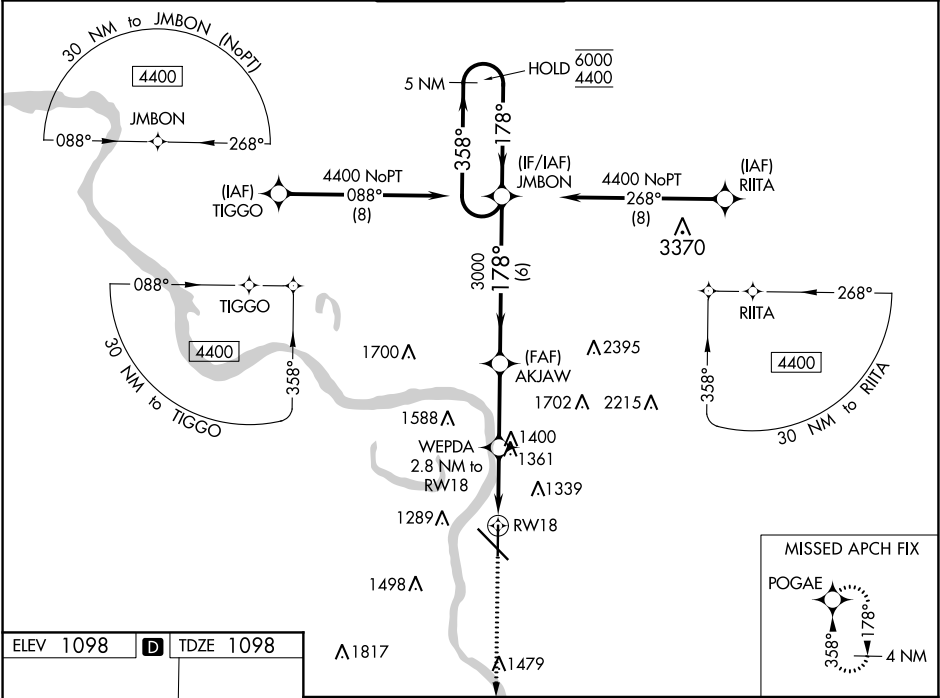


WAAS CH <b>77838</b> <b>W18A</b>	APP CRS <b>178°</b>	Rwy Idg TDZE <b>1098</b> Apt Elev <b>1098</b>	<b>6400</b> <b>1098</b> <b>1098</b>
--	------------------------	---	---

RNAV (GPS) RWY 18

SIOUX GATEWAY/BRIGADIER GENERAL BUD DAY FIELD (SU~~X~~)

RNP APCH. <div>                         ▼ For uncompensated Baro-VNAV systems, LNAV/VNAV                          ▲ NA below -20°C or above 54°C.                     </div>		MISSED APPROACH: Climb to 3200 direct POGAE and hold.	
ATIS <b>119.45 270.8</b>	SIOUX CITY APP CON * <b>124.6 307.0</b>	SIOUX CITY TOWER * <b>118.7 (CTAF) 0 254.3</b>	<div>                         GND CON  <b>121.9 348.6</b> </div> <div>                         UNICOM  <b>122.95</b> </div>



3200

POGAE

↑

✱

\*LNAV only

\*1.6 NM to RW18

WEPDA  
2.8 NM to RW18

AKJAW  
3000

JMBON  
5 NM Holding Pattern

3000

3000

3000

178°

178°

178°

358°

358°

6000

4400

GP 3.00°

TCH 54

CATEGORY	A	B	C	D
LPV DA	1352-¾ 254 (300-¾)			
LNAV/ VNAV DA	1430-1 332 (400-1)			
LNAV MDA	1680-1 582 (600-1)	1680-1¾ 582 (600-1¾)		
CIRCLING	1680-1 582 (600-1)	1700-1 602 (700-1)	1700-1¾ 602 (700-1¾)	1860-2½ 762 (800-2½)

NC-3, 31 DEC 2020 to 28 JAN 2021

NC-3, 31 DEC 2020 to 28 JAN 2021