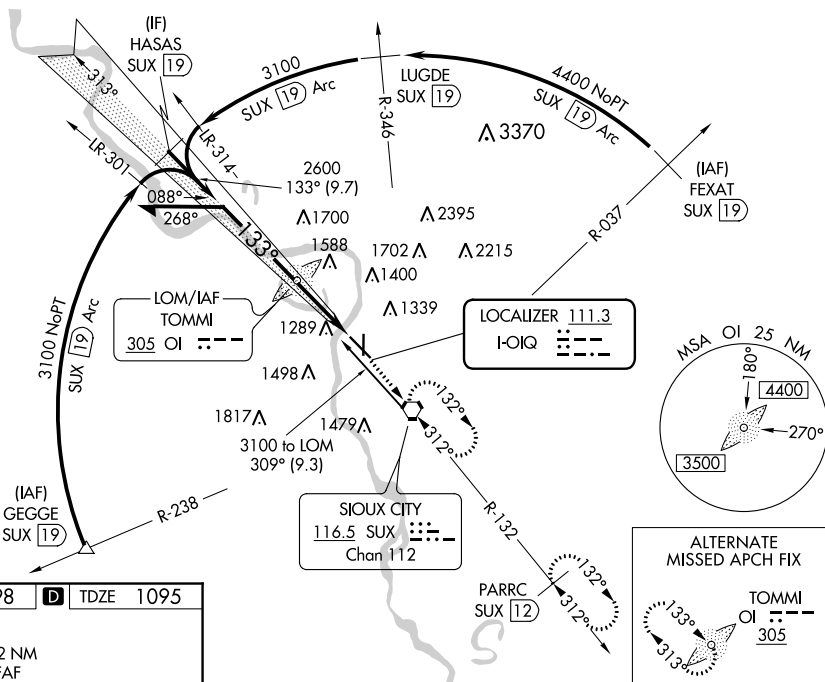


ILS or LOC RWY 13
SIOUX GATEWAY/BRIGADIER GENERAL BUD DAY FIELD (SUX)

MISSED APPROACH: Climb to 3300 direct SUX VORTAC and hold, continue climb-in-hold to 3300 (TACAN aircraft continue on SUX VORTAC R-132 to PARRC/12 DME and hold southeast, right turn, 312° inbound).

T
A Inop table does not apply to S-ILS 13 all Cats.
For inop ALS increase S-LOC 13 Cat E visibility
to 1 $\frac{3}{8}$ SM.



UNICOM
122.95


FAF to MAP 4.2 NM

Knots	60	90	120	150	180
Min:Sec	4:12	2:48	2:06	1:41	1:24

VGSI and ILS glidepath not coincident
(VGSI Angle 3.00/TCH 50).

Remain within 15 NM TOMMI LOM

3300	SUX
	

CATEGORY	A	B	C	D	E
S-ILS 13	1295/40 200 (200-¾)				
S-LOC 13	1580/40 485 (500-¾)		1580/60 485 (500-1¼)		
 CIRCLING	1640-1 542 (600-1)	1700-1 602 (700-1)	1700-1¾ 602 (700-1¼)	1840-2½ 742 (800-2½)	2000-3 902 (1000-3)

SIOUX GATEWAY/BRIGADIER GENERAL BUD DAY FIELD (SUX)
 42°24'N-96°23'W ILS or LOC RWY 13