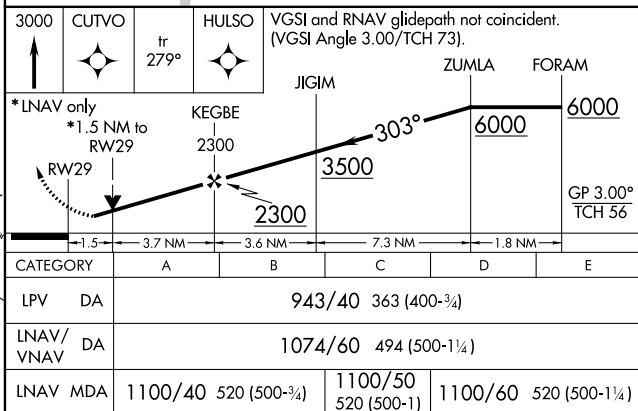


RNAV (GPS) Y RWY 29
ST LOUIS LAMBERT INTL (STL)

MISSED APPROACH:
Climb to 3000 direct CUTVO
and on track 279° to HULSO
and hold.

RADAR REQUIRED



ST LOUIS LAMBERT INTL (STL)

RNAV (GPS) Y RWY 29