

APP CRS	Rwy Idg	9003
123°	TDZE	541
	Apt Elev	618

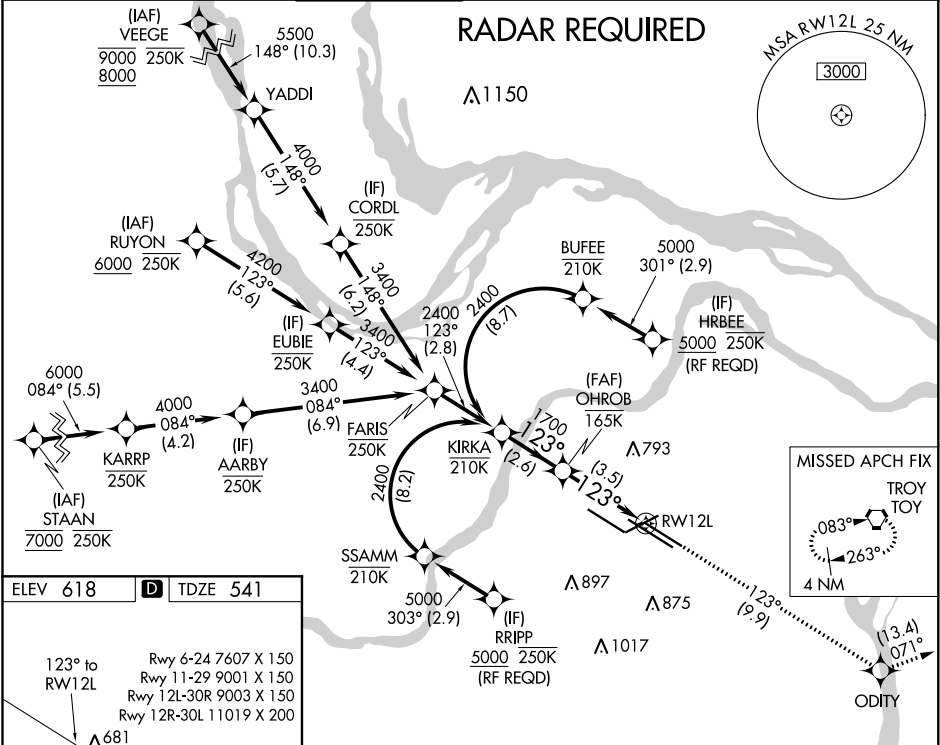
RNAV (RNP) Z RWY 12L
ST LOUIS LAMBERT INTL (STL)

For uncompensated Baro-VNAV systems, procedure NA below -16°C (4°F) or above 54°C (130°F). GPS required. For inop ALS, increase RNP 0.30 all Cats visibility to 1 3/4 SM. Simultaneous approach authorized with Rwy 11, except for arrivals at RIPP and HRBEE. Use of FD or AP required during simultaneous operations.

ALSF-2

MISSED APPROACH: Climb to 3000 on track 123° to ODITY and on track 071° to TOY VORTAC and hold.

D-ATIS 125.025 379.925	ST. LOUIS APP CON 132.125 360.6	ST. LOUIS TOWER 120.05 284.6	GND CON 121.9 348.6 (Inbound) 121.65 377.175 (Outbound) 118.925 227.125 (Rwy 11/29)	CLNC DEL 119.5 363.1	CPDLC
------------------------------	------------------------------------	---------------------------------	--	-------------------------	-------



ELEV 618 TDZE 541

123° to RWY12L

Rwy 6-24 7607 X 150
Rwy 11-29 9001 X 150
Rwy 12L-30R 9003 X 150
Rwy 12R-30L 11019 X 200

HIRL all Rwys
REIL Rwy 12L
TDZ/CL Rwys 11, 12L, 12R, 29, and 30R

KIRKA OHROB

2400 1700

123°

GP 3.00° TCH 54

2.6 NM 3.5 NM

See planview for multiple IF locations.

3000	ODITY	tr 071°	TOY
------	-------	---------	-----

CATEGORY	A	B	C	D
RNP 0.30 DA	1043/60 502 (500-1 1/4)			

AUTHORIZATION REQUIRED