

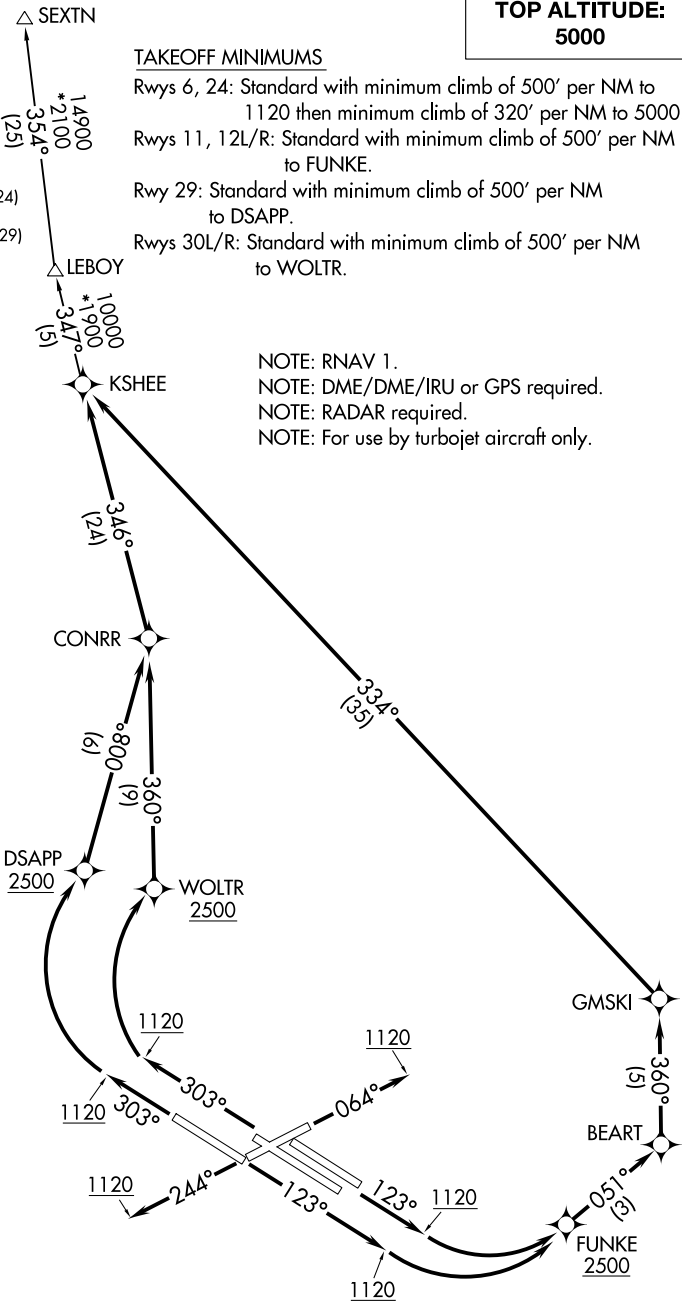
D-ATIS  
125.025 379.925  
CLNC DEL  
119.5 363.1  
CPDLC  
GND CON  
121.9 348.6 (Inbound)  
121.65 377.175 (Outbound)  
118.925 227.125 (Rwy 11/29)  
ST. LOUIS TOWER  
120.05 284.6 (Rwys 12L/30R, 24)  
118.5 257.7 (Rwy 12R/30L)  
132.475 239.275 (Rwys 6, 11/29)  
ST. LOUIS DEP CON  
119.15 335.5

TOP ALTITUDE:  
5000

TAKEOFF MINIMUMS

Rwys 6, 24: Standard with minimum climb of 500' per NM to 1120 then minimum climb of 320' per NM to 5000.  
Rwys 11, 12L/R: Standard with minimum climb of 500' per NM to FUNKE.  
Rwy 29: Standard with minimum climb of 500' per NM to DSAPP.  
Rwys 30L/R: Standard with minimum climb of 500' per NM to WOLTR.

NOTE: RNAV 1.  
NOTE: DME/DME/IRU or GPS required.  
NOTE: RADAR required.  
NOTE: For use by turbojet aircraft only.



(NARRATIVE ON FOLLOWING PAGE)

NOTE: Chart not to scale.

NC-3, 31 DEC 2020 to 28 JAN 2021

NC-3, 31 DEC 2020 to 28 JAN 2021