

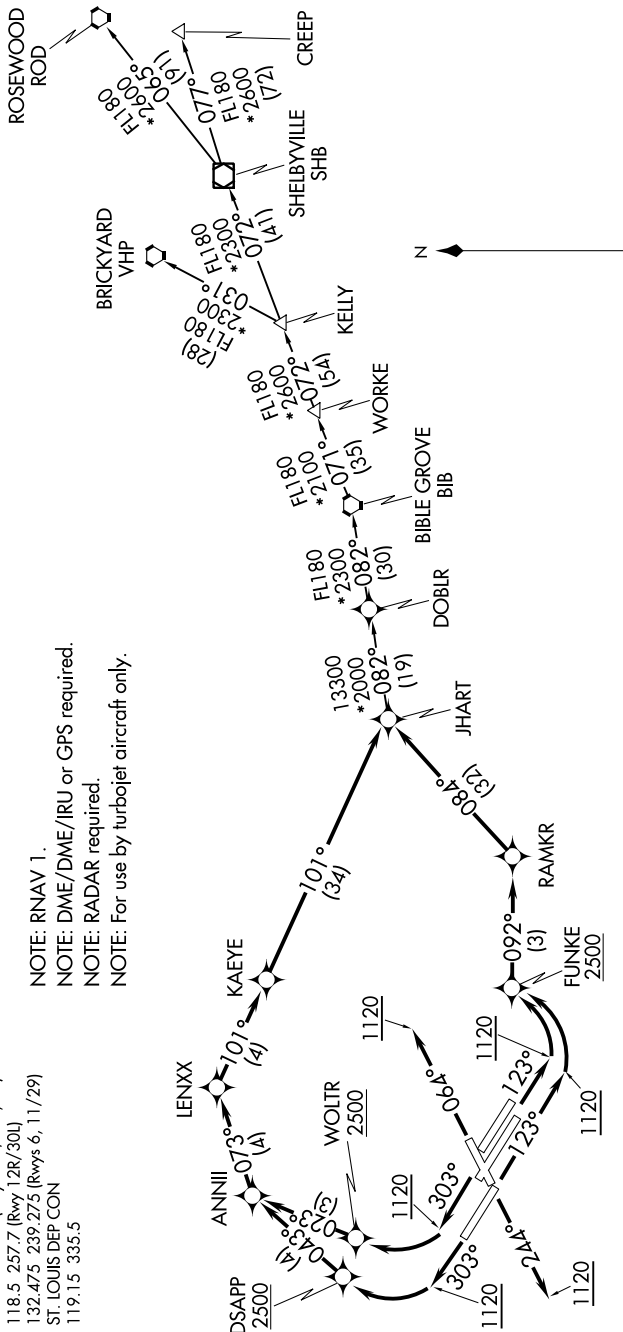
TOP ALTITUDE:
5000

TAKEOFF MINIMUMS

Rwy 6: Standard with minimum climb of 500' per NM to 1120 then minimum climb of 270' per NM to 5000.
Rwy 24: Standard with minimum climb of 500' per NM to 1120 then minimum climb of 250' per NM to 5000.
Rwys 11, 12L/R: Standard with minimum climb of 500' per NM to FUNKE.
Rwy 29: Standard with minimum climb of 500' per NM to DSAPP.
Rwys 30L/R: Standard with minimum climb of 500' per NM to WOLTR.

NOTE: RNAV 1.
NOTE: DME/DME/IRU or GPS required.
NOTE: RADAR required.
NOTE: For use by turbojet aircraft only.

D-ATIS	125.025	379.925
CLINC DEL	119.5	363.1
CPDLC		
GND CON	121.9	348.6 (Inbound)
	121.65	377.175 (Outbound)
	118.925	227.125
ST. LOUIS TOWER	120.05	284.6 (Rwy 18L)
	118.5	257.7 (Rwy 18R)
	132.475	239.275
ST. LOUIS DEP CON	119.15	335.5



NOTE: Chart not to scale.

(NARRATIVE ON FOLLOWING PAGE)

NC-3, 31 DEC 2020 to 28 JAN 2021