

## CHUUC FIVE DEPARTURE (RNAV)

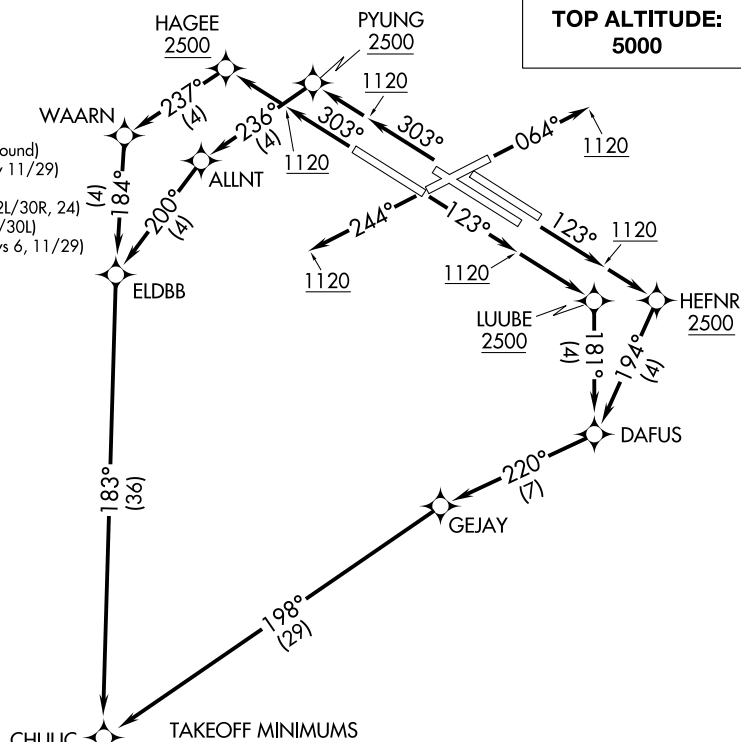
AL-360 (FAA)

ST LOUIS LAMBERT INTL (STL)

ST. LOUIS, MISSOURI

D-ATIS  
125.025 379.925  
CLNC DEL  
119.5 363.1  
CPDLC  
GND CON  
121.9 348.6 (Inb  
121.65 377.175  
118.925 227.125  
ST. LOUIS TOWER  
120.05 284.6 (Rw  
118.5 257.7 (Rwy  
132.475 239.275  
ST. LOUIS DEP CO  
128.1 307.05

**TOP ALTITUDE:**  
5000



## TAKEOFF MINIMUMS

Rwy 6: Standard with minimum climb of 500' per NM to 1120 then minimum climb of 240' per NM to 5000.

Rwy 24: Standard with minimum climb of 500' per NM to 1120 then minimum climb of 260' per NM to 5000.

Rwy 11: Standard with minimum climb of 500' per NM to LUUBE.

Rwys 12L/R: Standard with minimum climb of 500' per NM to HEFNR.

Rwy 29: Standard with minimum climb of 500' per NM to HAGEE.

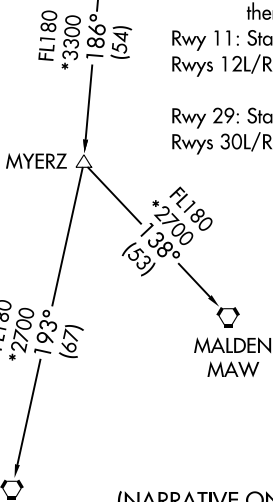
Rwys 30L/R: Standard with minimum climb of 500' per NM to PYUNG.

NOTE: RNAV 1.

NOTE: DME/DME/IRU or GPS required.

NOTE: RADAR required.

NOTE: For use by turbojet aircraft only.



(NARRATIVE ON FOLLOWING PAGE)

NOTE: Chart not to scale.

## CHUUC FIVE DEPARTURE (RNAV)

(CHUUC5.CHUUC) 19JUL18

ST. LOUIS, MISSOURI

ST LOUIS LAMBERT INTL (STL)

NC-3, 31 DEC 2020 to 28 JAN 2021

NC-3, 31 DEC 2020 to 28 JAN 2021