

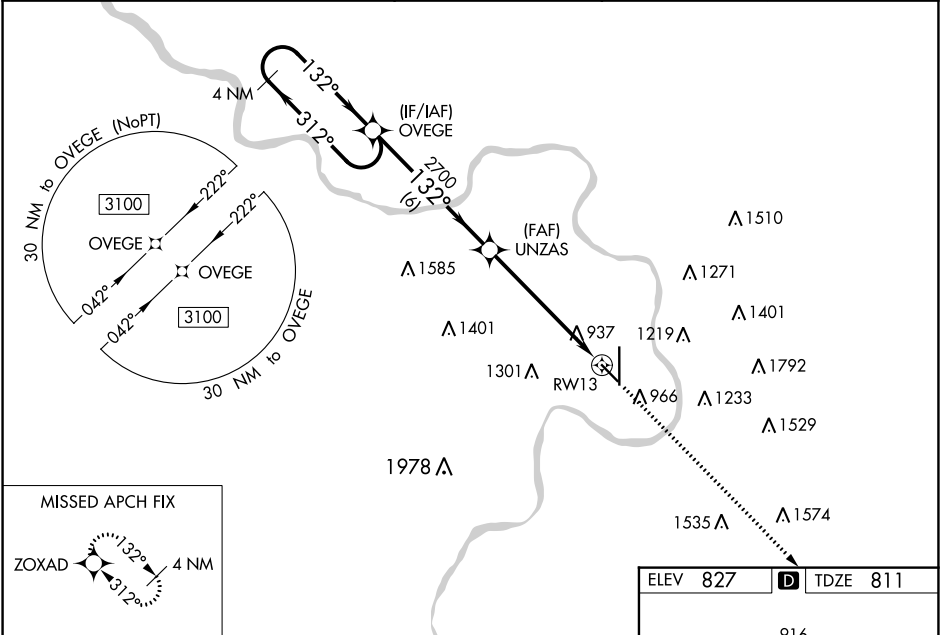
WAAS CH 57935 W13A	APP CRS 132°	Rwy Idg TDZE Apt Elev	4797 811 827
--	------------------------	-----------------------------	---

RNAV (GPS) RWY 13
ROSECRANS MEMORIAL (STJ)

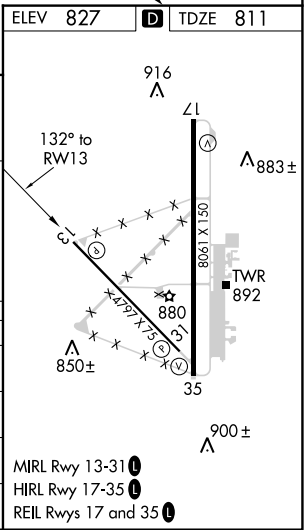
⚠ For uncompensated Baro-VNAV systems, LNAV/VNAV NA below -20°C (-4°F) or above 54°C (130°F). DME/DME RNP-0.3 NA. Straight-In minimums NA at night. Baro-VNAV and VDP NA when using Kansas City Intl altimeter setting. Helicopter visibility reduction below ¾ SM NA. When local altimeter setting not received, use Kansas City Intl altimeter setting and increase all DA 97 feet, and LPV visibility ¾ mile all Cats, LNAV/VNAV visibility ¼ mile all Cats; increase all MDA 100 feet and Circling Cat C ½ mile, Cat D ¼ mile.

MISSED APPROACH:
Climb to 3100 direct ZOXAD and hold.

ATIS 125.05	ST. JOSEPH APP CON ★ 120.35 360.8	ST. JOSEPH TOWER ★ 126.9 (CTAF) 239.0	GND CON 121.9	UNICOM 122.95
-----------------------	---	---	-------------------------	-------------------------



<div>4 NM Holding Pattern</div> <div>3100 ← 312° / 132° →</div> <div>GP 3.00° TCH 50</div> <div>6 NM 3.5 NM 2.3 NM</div>				
CATEGORY	A	B	C	D
LPV DA	1377-1⅞ 566 (600-1⅞)			
LNAV/VNAV DA	1416-2¼ 605 (600-2¼)			
LNAV MDA	1580-1 769 (800-1)	1580-1¼ 769 (800-1¼)	1580-2½ 769 (800-2½)	
CIRCLING	1580-1 753 (800-1)	1580-1¼ 753 (800-1¼)	1620-2½ 793 (800-2½)	1640-2¾ 813 (900-2¾)



NC-3, 31 DEC 2020 to 28 JAN 2021

NC-3, 31 DEC 2020 to 28 JAN 2021