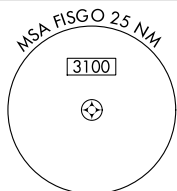


RNAV (GPS) RWY 21

CHARLES B WHEELER DOWNTOWN (MKC)

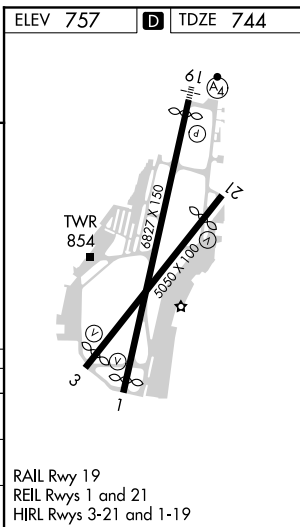
MISSED APPROACH: Climb to 3700 direct HOTVA and on track 169° to ZADGU and on track 091° to ULKEC and on track 053° to ANX VORTAC and hold.

GND CON
121 9



Procedure NA for arrival on ANX
airway radials 235 CW 358.

ELEV 757	D	TDZE 744
----------	----------	----------



39°07'N-94°36'W

CHARLES B WHEELER DOWNTOWN (MKC)
RNAV (GPS) RWY 21