

WAAS
CH **90320**
W19A

APP CRS
192°

Rwy Idg
TDZE **754**
Apt Elev **757**

RNAV (GPS) RWY 19

CHARLES B WHEELER DOWNTOWN (MKC)

▼

▲

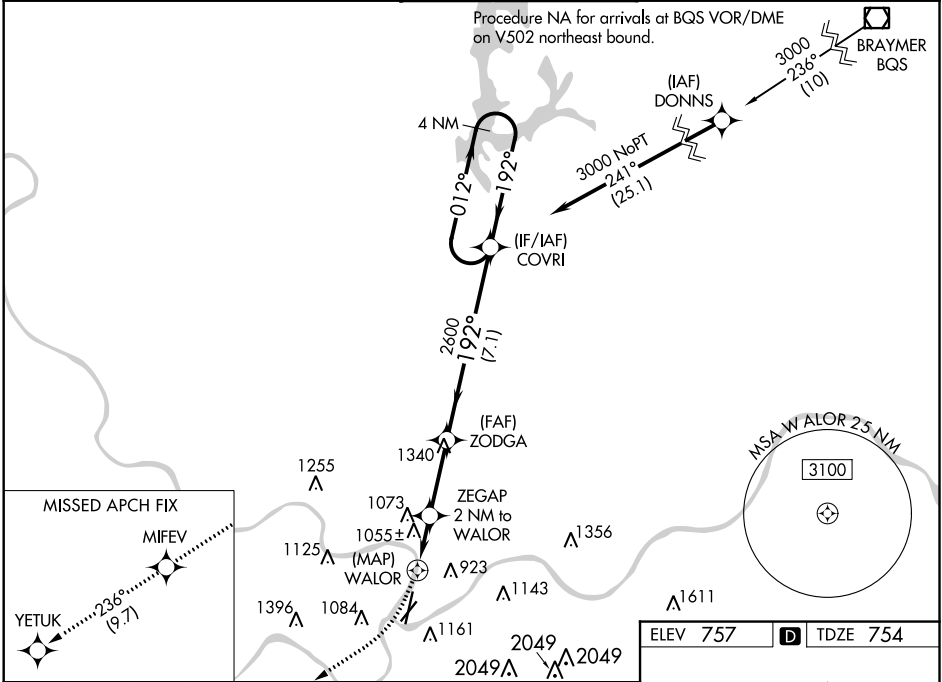
For uncompensated Baro-VNAV systems, LNAV/VNAV NA below -6°C (22°F) or above 54°C (130°F). DME/DME RNP-0.3 NA. Circling Cat C/D NA to Rwy 3. Rwy 19 helicopter visibility reduction below RVR 4000 NA. Circling NA to Rwy 21. For inop ALS, increase LNAV Cat A/B visibility to RVR 6000 and Cat C to 1¾ SM. Inop table does not apply to LNAV Cat D.

MALSF

MISSED APPROACH:

Climbing right turn to 4000 direct MIFEV and on track 236° to YETUK and hold.

ATIS 120.75	KANSAS CITY APP CON 118.4 307.35	DOWNTOWN TOWER 133.3 233.7	CLNC DEL 121.9	GND CON 121.9
-----------------------	--	--------------------------------------	--------------------------	-------------------------



4000

MIFEV

tr 236°

YETUK

*LNAV only

ZODGA

ZEGAP 2 NM to WALOR

*0.8 NM to WALOR

WALOR

1700*

2600

192°

012°

3000

GP 3.00°

TCH 46

COVRI

4 NM Holding Pattern

0.9

0.8

1.2 NM

2.8 NM

7.1 NM

CATEGORY	A	B	C	D
LPV DA	1157/60		403 (400-1¼)	
LNAV/VNAV DA	1300-1½		546 (600-1½)	
LNAV MDA	1340/40	586 (600-¾)	1340-1⅜ 586 (600-1⅜)	1640-2½ 886 (900-2½)
CIRCLING	1380-1 623 (700-1)	1400-1 643 (700-1)	1460-2 703 (800-2)	1640-3 883 (900-3)

TWR 854

RAIL Rwy 19

REIL Rwy 1 and 21

HIRL Rwy 3-21 and 1-19