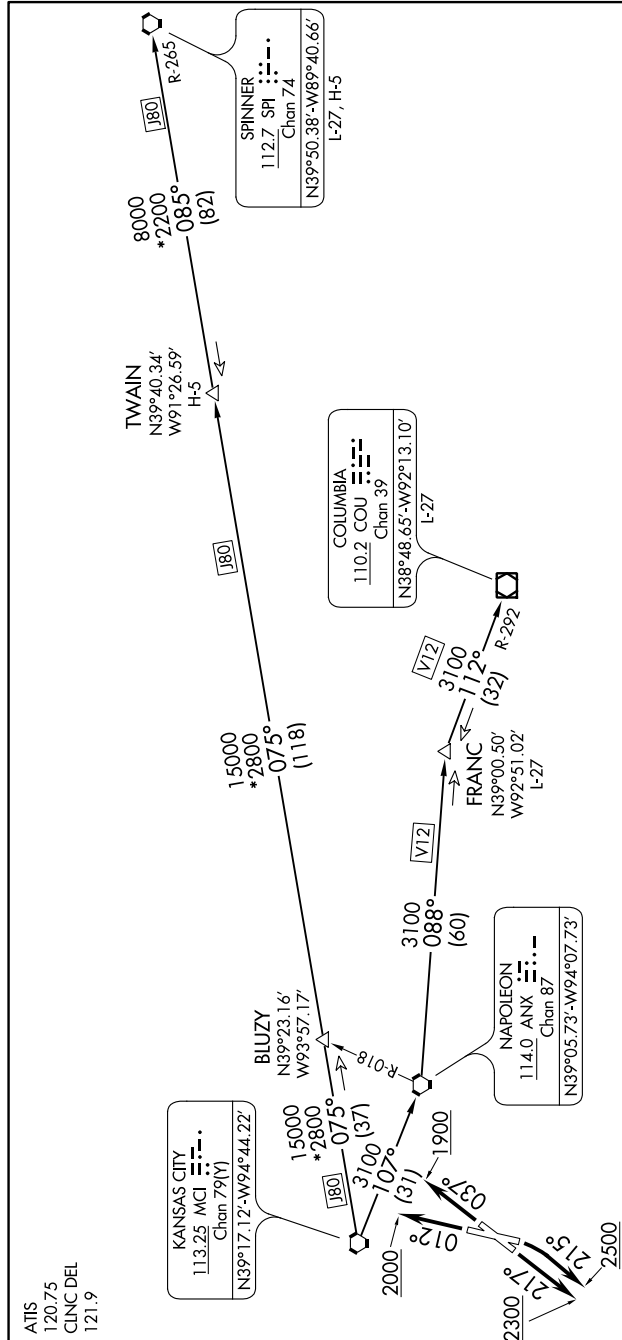


NC-3, 31 DEC 2020 to 28 JAN 2021



NOTE: RADAR required.

## TAKEOFF MINIMUMS

Rwy 1: 300-1<sup>7</sup>/<sub>8</sub> or standard with a minimum climb of 312' per NM to 1000'.

Rwy 3: Standard.

Rwy 19: Standard with minimum climb of 465' per NM to 2500'.

Rwy 21: 300-1<sup>5</sup>/<sub>8</sub> or standard with minimum climb of 260' per NM to 1000'.

(NARRATIVE ON FOLLOWING PAGE)

NOTE: Chart not to scale.

NC-3, 31 DEC 2020 to 28 JAN 2021