

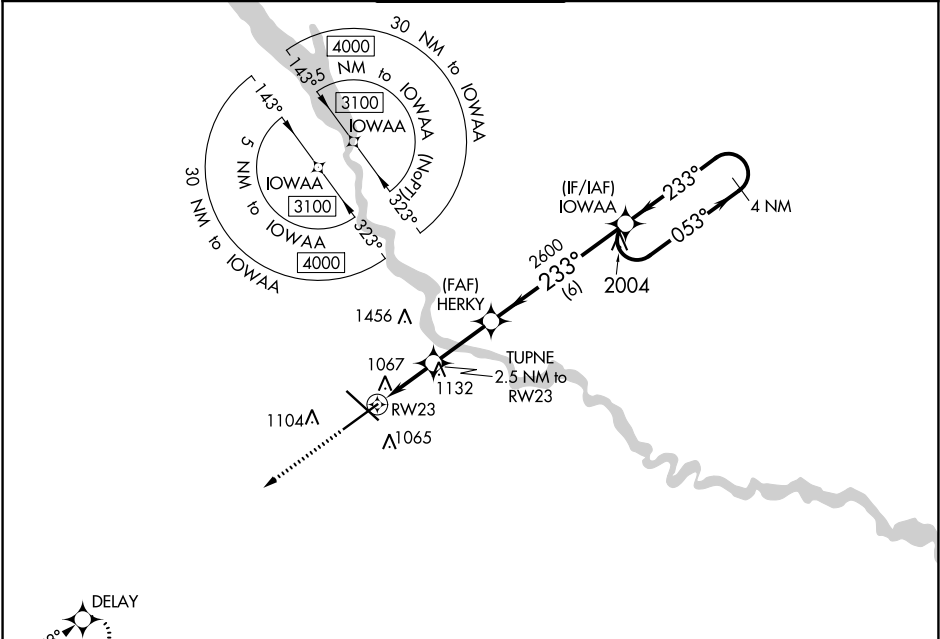
WAAS CH 97541 W23A	APP CRS 233°	Rwy Idg TDZE 939 Apt Elev 958
--	------------------------	---

RNAV (GPS) RWY 23

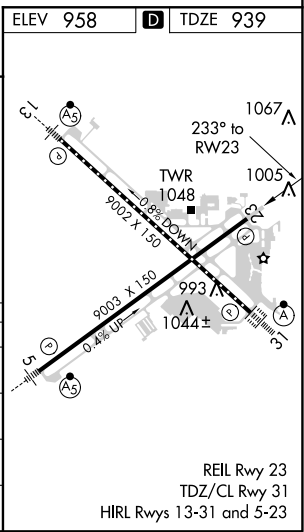
DES MOINES INTL (DSM)

<div><div>▼</div><div>▲</div></div> <div>For uncompensated Baro-VNAV systems, LNAV/VNAV NA below -19°C (-2°F) or above 54°C (130°F). Rwy 23 helicopter visibility reduction below ¾ SM NA. DME/DME RNP-0.3 NA.</div>	MISSED APPROACH: Climb to 3000 direct DELAY and hold.
--	---

ATIS 119.55	DES MOINES APP CON 123.9 307.15	DES MOINES TOWER 118.3 257.8	GND CON 121.9 348.6	CLNC DEL 134.15 317.55
-----------------------	---	--	-------------------------------	----------------------------------



<div><div>3000</div><div>DELAY</div></div>	
<div><div>*LNAV only</div><div><div>TUPNE 2.5 NM to RW23</div><div>HERKY 2600</div><div>IOWAA 4 NM Holding Pattern</div></div><div><div>*1 NM to RW23</div><div>1780*</div><div>2600</div><div>3100</div><div>GP 3.00° TCH 56</div></div></div>	
CATEGORY	A B C D
LPV DA	1262-1 323 (400-1)
LNAV/VNAV DA	1242-7/8 303 (300-7/8)
LNAV MDA	1320-1 381 (400-1) 1320-1½ 381 (400-1½)
CIRCLING	1420-1 462 (500-1) 1600-1¾ 642 (700-1¾) 1760-2½ 802 (900-2½)



NC-3, 31 DEC 2020 to 28 JAN 2021

NC-3, 31 DEC 2020 to 28 JAN 2021