

WAAS CH 49238 W31A	APP CRS 314°	Rwy Idg 4201 TDZE 1315 Apt Elev 1318
--	------------------------	---

RNAV (GPS) RWY 31

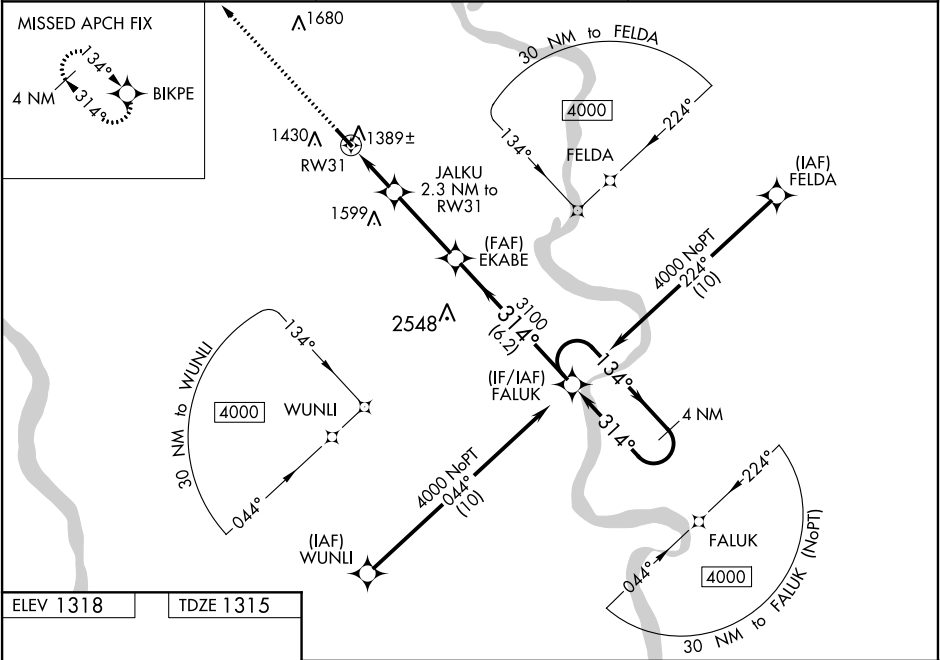
BLAIR MUNI (BTA)

⚠

For uncompensated Baro-VNAV systems, LNAV/VNAV NA below -17°C (2°F) or above 54°C (130°F). Baro-VNAV and VDP NA when using Eppley Airfield altimeter setting. DME/DME RNP-0.3 NA. When local altimeter setting not received, use Eppley Airfield altimeter setting and increase LPV and LNAV/VNAV DA to 1638 and visibility to 1½ mile all Cats, increase all MDA 80 feet and LNAV Cat C visibility to 1½ mile.

MISSED APPROACH:
Climb to 3100 direct BIKPE and hold.

AWOS-3 120.225	OMAHA APP CON 120.1 354.05	UNICOM 123.05 (CTAF) 1
--------------------------	--------------------------------------	----------------------------------



ELEV 1318

TDZE 1315

3100 BIKPE

JALKU 2.3 NM to RW31

EKBAB 3100

FALUK Holding Pattern

4 NM

134° → 4000

← 314°

GP 3.00° TCH 40

2060*

3100

314°

1 NM

1.3 NM

3.2 NM

6.2 NM

CATEGORY	A	B	C	D
LPV DA	1564-7/8	250 (300-7/8)		NA
LNAV/VNAV DA	1564-7/8	250 (300-7/8)		NA
LNAV MDA	1640-1	326 (400-1)		NA
CIRCLING	1740-1 422 (500-1)	1780-1 462 (500-1)	1780-1½ 462 (500-1½)	NA