

WAAS CH 66021 W18A	APP CRS 175°	Rwy Idg 5500 TDZE 1174 Apt Elev 1174
----------------------------------------	------------------------	-----------------------------------------------------------------

RNAV (GPS) RWY 18

COFFEY COUNTY (UKL)

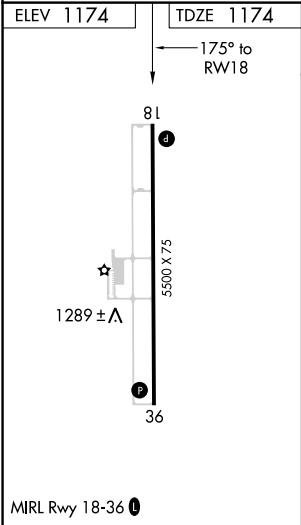
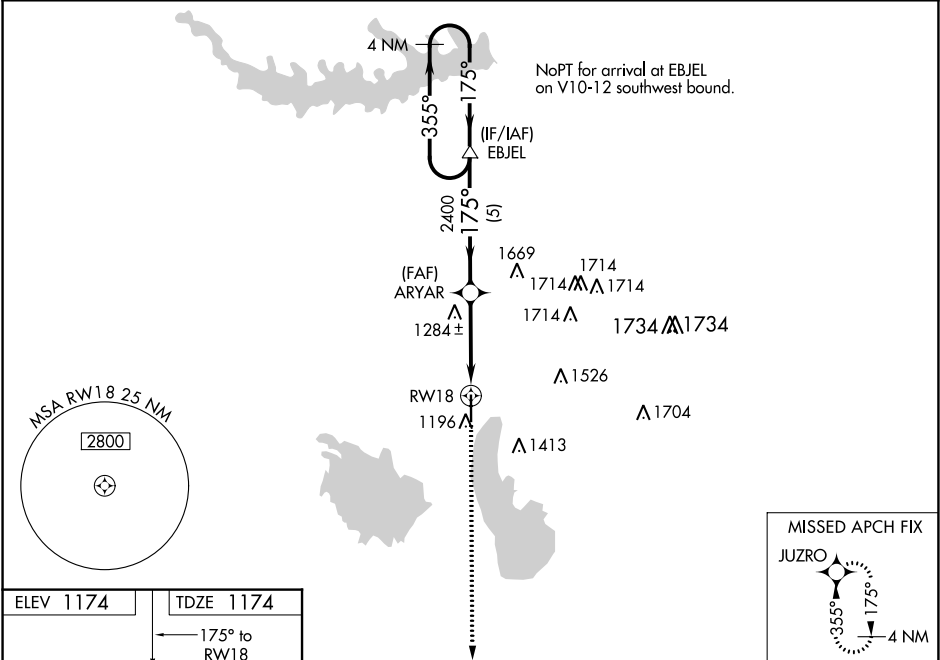
RNP APCH.

NA

Baro-VNAV NA when using Emporia altimeter setting. For uncompensated Baro-VNAV systems, LNAV/VNAV NA below -17°C (2°F) or above 54°C (130°F). When local altimeter setting not received, use Emporia altimeter setting and increase all DA 56 feet and all MDA 60 feet and LNAV Cat C visibility ¼ mile. Procedure NA at night. Rwy 18 helicopter visibility reduction below 1 SM NA.

MISSED APPROACH:
Climb to 3000 direct
JUZRO and hold.

AWOS-3 121.125	KANSAS CITY CENTER 127.725 270.25	UNICOM 123.0 (CTAF) 0
--------------------------	---------------------------------------------	---------------------------------



4 NM Holding Pattern		VGSI and RNAV glidepath not coincident (VGSI Angle 3.00/TCH 40).		3000	JUZRO
EBJEL		ARYAR		2400	RWY 18
GP 3.00° TCH 51		2400		5 NM	3.7 NM
CATEGORY	A	B	C	D	
LPV DA	1424-1	250 (300-1)		NA	
LNAV/VNAV DA	1424-1	250 (300-1)		NA	
LNAV MDA	1540-1	366 (400-1)		NA	
CIRCLING	1560-1 386 (400-1)	1640-1 466 (500-1)	1640-1½ 466 (500-1½)	NA	

NC-2, 31 DEC 2020 to 28 JAN 2021

NC-2, 31 DEC 2020 to 28 JAN 2021