

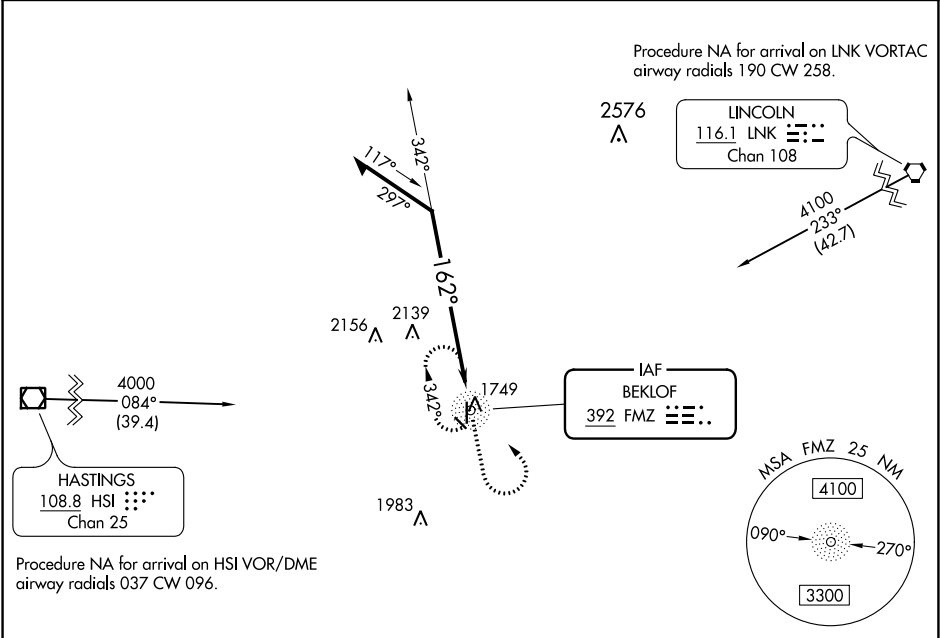
NDB FMZ	APP CRS	Rwy Idg
392	162°	4317
		TDZE 1636
		Apt Elev 1636



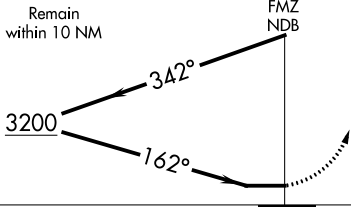
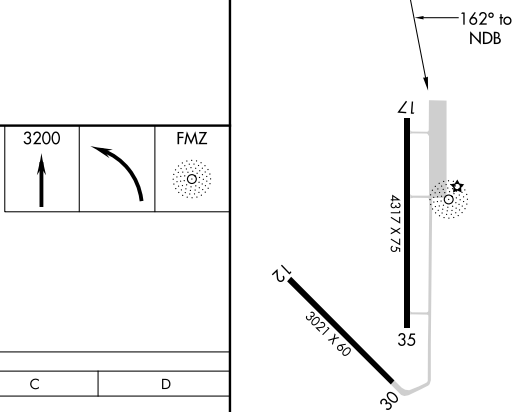

NDB RWY 17
FAIRMONT STATE AIRFIELD (F'MZ)


**NA** Circling Rwy 12, 30 NA at night.
Use York altimeter setting, when not received use Hebron altimeter setting and increase all MDA 40 feet.

MISSED APPROACH: Climb to 3200 then left turn direct FMZ NDB and hold.

JYR AWOS-3 124.175	MINNEAPOLIS CENTER 119.4 278.8	CTAF 122.9 0
------------------------------	--	------------------------



ELEV 1636		TDZE 1636		
Remain within 10 NM		3200 	FMZ 	
				
CATEGORY	A	B	C	D
S-17	2540-1¼	904 (1000-1¼)	NA	
 CIRCLING	2540-1¼	904 (1000-1¼)	NA	

MIRL Rwy 17-35 

NC-2, 31 DEC 2020 to 28 JAN 2021

NC-2, 31 DEC 2020 to 28 JAN 2021