

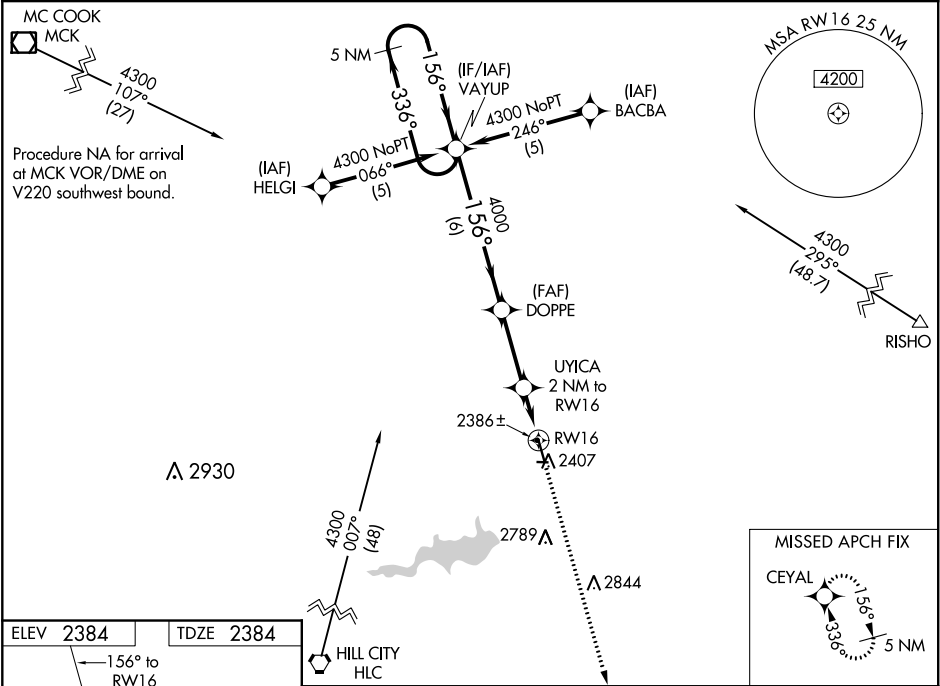
WAAS CH 99519 W16A	APP CRS 156°	Rwy Idg 4701 TDZE 2384 Apt Elev 2384
--	------------------------	---

RNAV (GPS) RWY 16
NORTON MUNI (NRN)

NA Baro-VNAV NA when using Hill City Muni altimeter setting. For uncompensated Baro-VNAV systems, LNAV/VNAV NA below -19°C (-2°F) or above 54°C (130°F). DME/DME RNP-0.3 NA. When local altimeter setting not received, use Hill City Muni altimeter setting and increase all DA 86 feet, all MDA 100 feet, increase LPV all Cats, LNAV/VNAV all Cats, LNAV Cat C visibility ¼ mile.

MISSED APPROACH:
Climb to 4300 direct
CEYAL and hold.

AWOS-3 118.275	DENVER CENTER 132.7 226.675	CTAF 122.9
--------------------------	---------------------------------------	----------------------



5 NM Holding Pattern VAYUP				
4300 ← 336° 156° → 4000 156° 4000 UYICA 2 NM to RW16 *3040				
GP 3.00° TCH 45 6 NM 2.9 NM 2 NM				
CATEGORY	A	B	C	D
LPV DA	2634-1 250 (300-1)			NA
LNAV/VNAV DA	2656-1 272 (300-1)			NA
LNAV MDA	2840-1	456 (500-1)	2840-1¼ 456 (500-1¼)	NA
CIRCLING	2880-1	496 (500-1)	2880-1½ 496 (500-1½)	NA

NC-2, 31 DEC 2020 to 28 JAN 2021

NC-2, 31 DEC 2020 to 28 JAN 2021