

| | | |
|--|------------------------|--|
| WAAS CH 72837 W35A | APP CRS 354° | Rwy ldg TDZE Apt Elev 3501 2702 2707 |
|--|------------------------|--|

RNAV (GPS) RWY 35

OBERLIN MUNI (OIN)

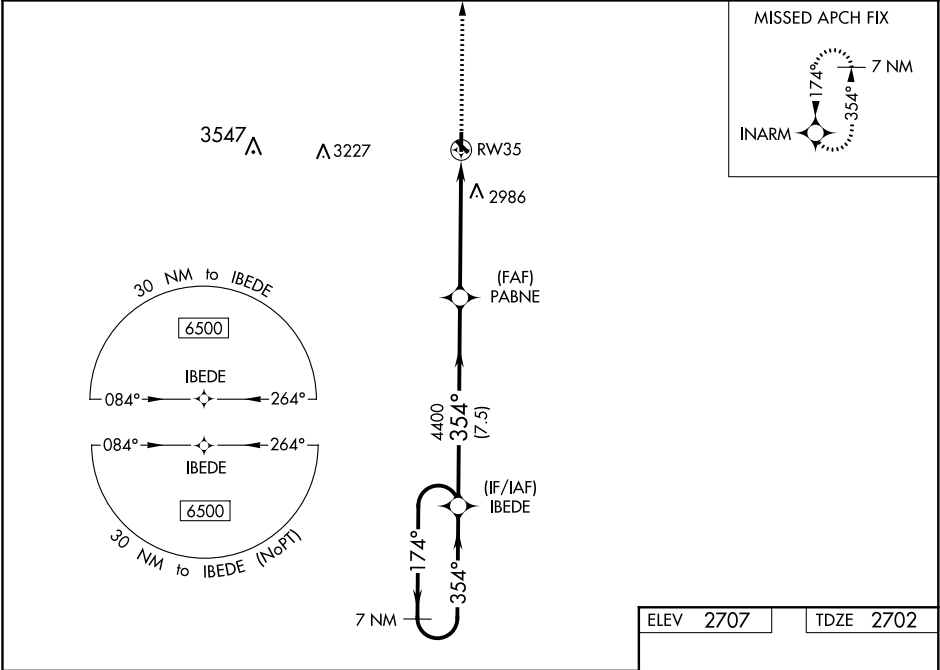
⚠

NA

DME/DME RNP-0.3 NA. Circling to Rwy 17, 30, 12 NA at night. Use McCook altimeter setting; when not received, use Hill City altimeter setting and increase all DA 94 feet and all MDA 100 feet, and increase LPV visibility all Cats ¼ mile, LNAV visibility Cat B ¼ mile, Cat C visibility ½ mile, and Circling Cat B visibility ¼ mile, Circling Cat C visibility ½ mile. Baro-VNAV NA.

MISSED APPROACH: Climb to 6500 direct INARM and hold, continue climb-in-hold to 6500.

| | | | |
|----------------------------|--------------------------|---------------------------------------|---------------------------------|
| MCK ASOS 119.025 | AWOS-3 119.225 | DENVER CENTER 132.7 226.675 | UNICOM 122.8 (CTAF) 1 |
|----------------------------|--------------------------|---------------------------------------|---------------------------------|



7 NM Holding Pattern

6500 ← 174°
354° →

GP 3.00°
TCH 43

IBEDE

PABNE

4400

RW35

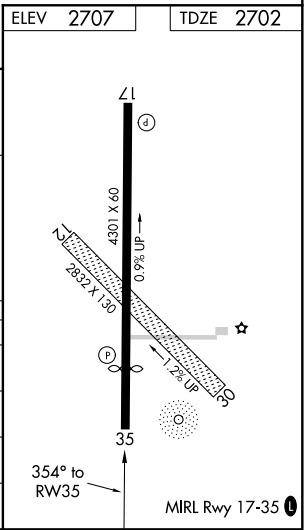
7.5 NM

5.3 NM

6500

INARM

| CATEGORY | A | B | C | D |
|--------------|-----------------------|-----------------------|-------------------------------|----|
| LPV DA | 2971-1 | 269 (300-1) | | NA |
| LNAV/VNAV DA | 3434-3 | 732 (800-3) | | NA |
| LNAV MDA | 3360-1 | 658 (700-1) | 3360-1 7/8 658 (700-1 7/8) | NA |
| CIRCLING | 3360-1 653 (700-1) | 3420-1 713 (800-1) | 3420-2 713 (800-2) | NA |



NC-2, 31 DEC 2020 to 28 JAN 2021

NC-2, 31 DEC 2020 to 28 JAN 2021