

WAAS CH <b>69500</b> <b>W34A</b>	APP CRS <b>341°</b>	Rwy Idg TDZE Apt Elev	<b>5000</b> <b>3035</b> <b>3045</b>
--	------------------------	-----------------------------	---

RNAV (GPS) RWY 34

OAKLEY MUNI (OEL)

RNP APCH.

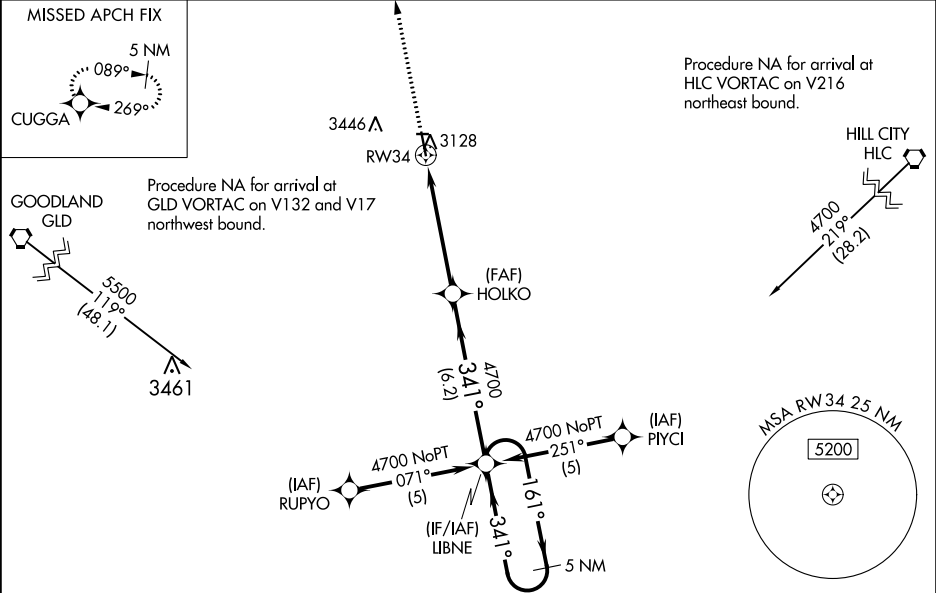
▼

⚠

When local altimeter setting not received, use Renner Field/Goodland Muni altimeter setting and increase all DAs/MDAs 200 feet and increase LNAV Cat C visibility ½ SM. For uncompensated Baro-VNAV systems, LNAV/VNAV NA below -21°C or above 42°C. Baro-VNAV NA when using Renner Field/Goodland Muni altimeter setting. Circling NA to Rwy 8 and 26. Circling Rwy 16 NA at night.

MISSED APPROACH: Climb to 4700 direct CUGGA and hold.

AWOS-3 <b>118.325</b>	DENVER CENTER <b>132.7 226.675</b>	UNICOM <b>122.8 (CTAF) 0</b>
--------------------------	---------------------------------------	---------------------------------



4700 CUGGA

HOLKO LIBNE

GP 3.00° TCH 40

CATEGORY	A	B	C	D
LPV DA	3285-1	250 (300-1)		NA
LNAV/VNAV DA	3472-1½	437 (500-1½)		NA
LNAV MDA	3380-1	345 (400-1)		NA
CIRCLING	3480-1½ 435 (500-1½)	3500-1½ 455 (500-1½)	3800-2¼ 755 (800-2¼)	NA

ELEV 3045 TDZE 3035

REIL Rwy 16 and 34 MRL Rwy 16-34