

APP CRS 041°	Rwy Idg TDZE Apt Elev	4900 3622 3622
------------------------	-----------------------------	---

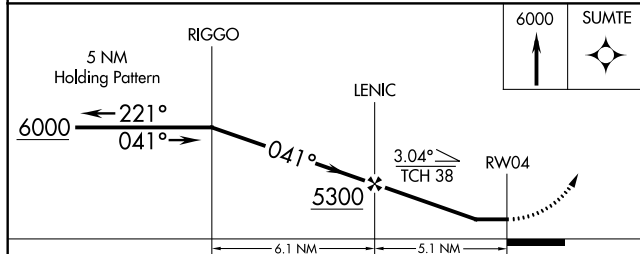
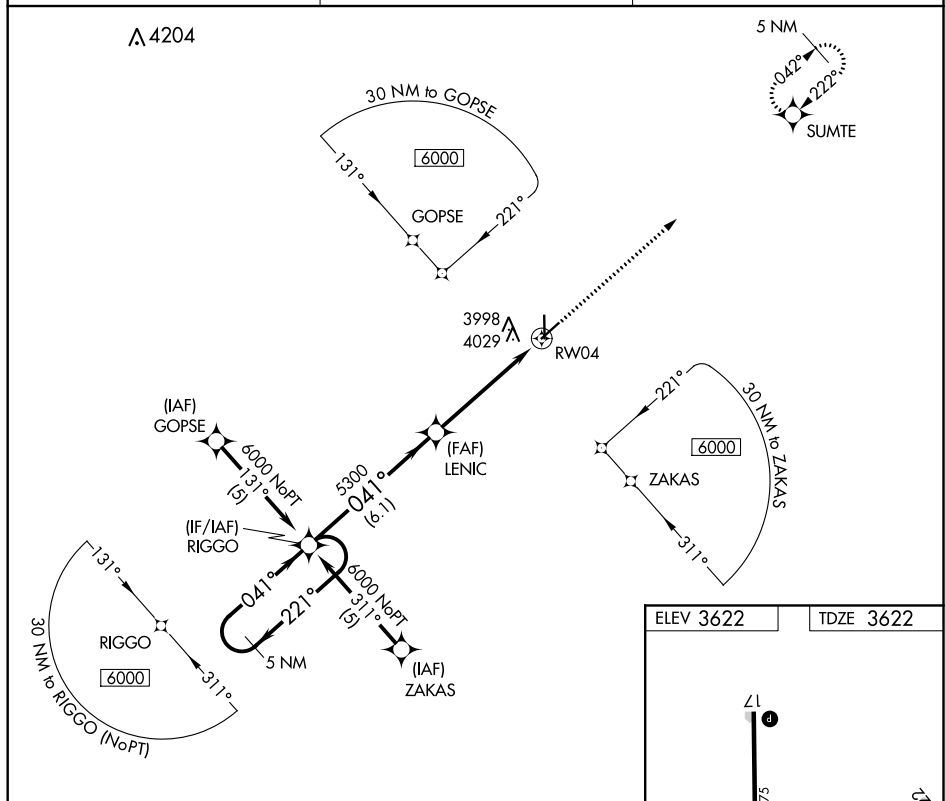
RNAV (GPS) RWY 4
ELKHART-MORTON COUNTY (EHA)

RNP APCH.

T Procedure NA at night. Rwy 4 helicopter visibility reduction below 1 SM NA.
A When local altimeter setting not received, use Liberal altimeter setting and increase all MDA 220 feet, increase Cats A/B visibility $\frac{1}{4}$ mile, and increase Cat C visibility $\frac{3}{4}$ mile. VDP NA when using Liberal altimeter setting.

MISSED APPROACH: Climb to 6000
direct SUMTE and hold.

AWOS-3PT 118.025	KANSAS CITY CENTER 134.0 290.8	UNICOM 122.8 (CTAF) 0
----------------------------	--	---------------------------------



CATEGORY	A	B	C	D
LNAV MDA	4340-1	718 (800-1)	4340-2 718 (800-2)	NA

