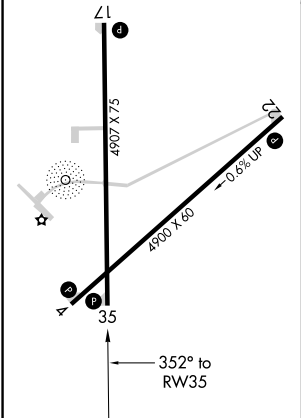
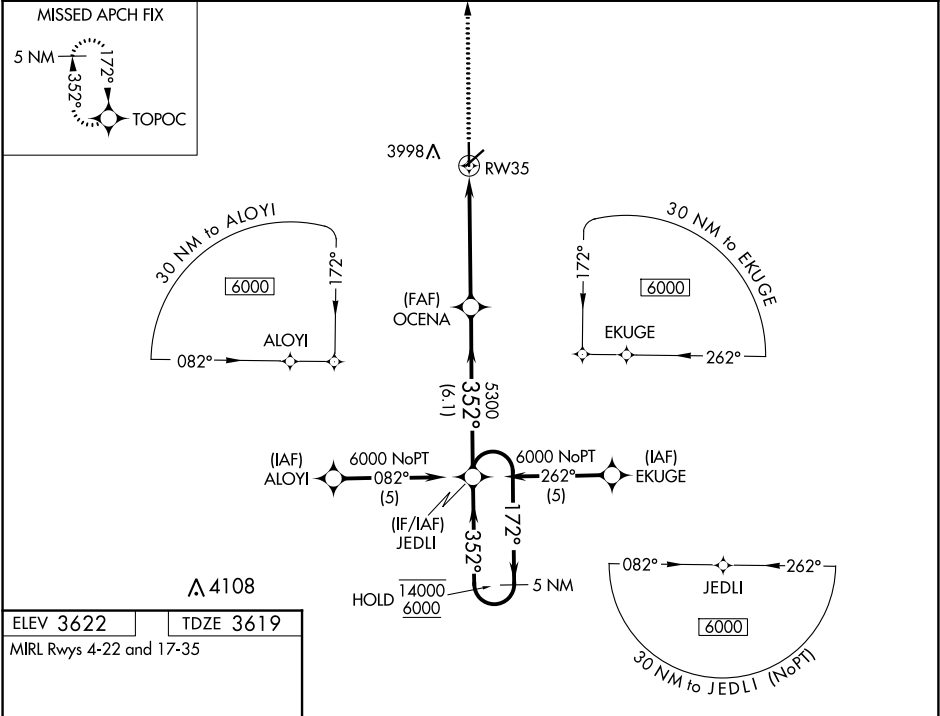





WAAS CH 50417 W35A	APP CRS 352°	Rwy Idg TDZE 3619 Apt Elev 3622
--	------------------------	---

RNAV (GPS) RWY 35
ELKHART-MORTON COUNTY (EHA)

RNP APCH.	MISSED APPROACH: Climb to 6000 direct TOPOC and hold.
-----------	--

AWOS-3PT 118.025	KANSAS CITY CENTER 134.0 290.8	UNICOM 122.8 (CTAF) 0
----------------------------	--	---------------------------------



6000		TOPOC		JEDLI		5 NM Holding Pattern	
							
* LNAV only.							
		* 1.9 NM to RW35		OCENA		5300	
1.9 NM		3.2 NM		6.1 NM			
172°		352°		352°		14000 6000	
GP 3.00°		TCH 44					
CATEGORY	A	B	C	D			
LPV DA	3869-1	250 (300-1)		NA			
LNAV/VNAV DA	4167-2	548 (600-2)		NA			
LNAV MDA	4280-1	661 (700-1)	4280-1 7/8 661 (700-1 7/8)	NA			

NC-2, 31 DEC 2020 to 28 JAN 2021

NC-2, 31 DEC 2020 to 28 JAN 2021