

VORTAC ICT

113.8

Chan 85

APP CRS

152°

Rwy Idg

5201

TDZE

1277

Apt Elev

1277

VOR RWY 18

WELLINGTON MUNI (E/GT)

DME required.

When local altimeter setting not received, use Wichita Dwight D Eisenhower National altimeter setting.

MISSED APPROACH: Climbing right turn to 3300 on heading 290° and HUT VOR/DME R-149 to REKOC/HUT 36 DME and hold.

AWOS-3

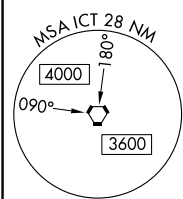
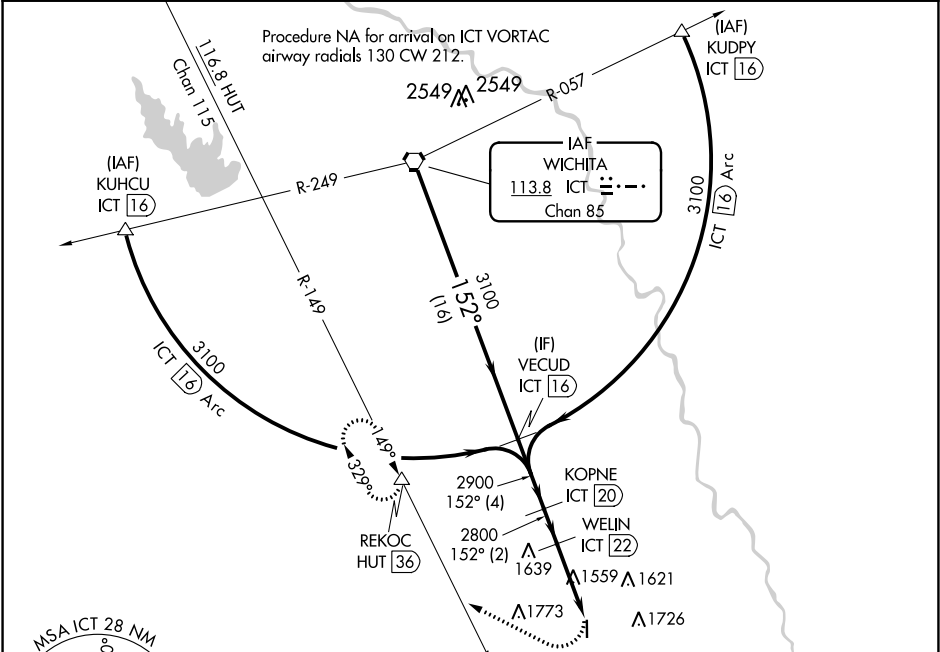
118.875

WICHITA APP CON

134.85

UNICOM

122.8 (CTAF) 0



ICT VORTAC		VECUD ICT 16		KOPNE ICT 20		WELIN ICT 22		HUT R-149		REKOC	
3600		3100		2900		2800		3300		hdg 290°	
152°		152°		152° (4)		152° (2)		1559		1621	
16 NM		4 NM		2 NM		4.5 NM		3.13°		TCH 40	
CATEGORY	A	B		C		D					
S-18	2100-1 823 (900-1)	2100-1¼ 823 (900-1¼)		2100-2½ 823 (900-2½)		2180-3 903 (1000-3)					
CIRCLING	2100-1¼ 823 (900-1¼)			2100-2½ 823 (900-2½)							

ELEV 1277

TDZE 1277

152° 4.5 NM from FAF

81

501 X 201

36

HIRL Rwy 18-36 0

REIL Rwy 18 and 36 0