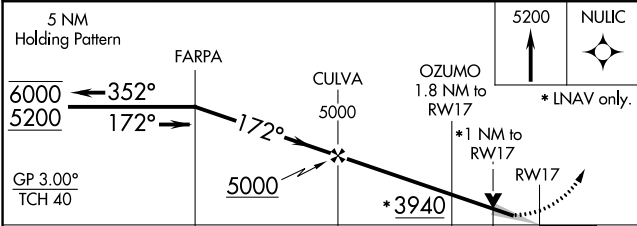
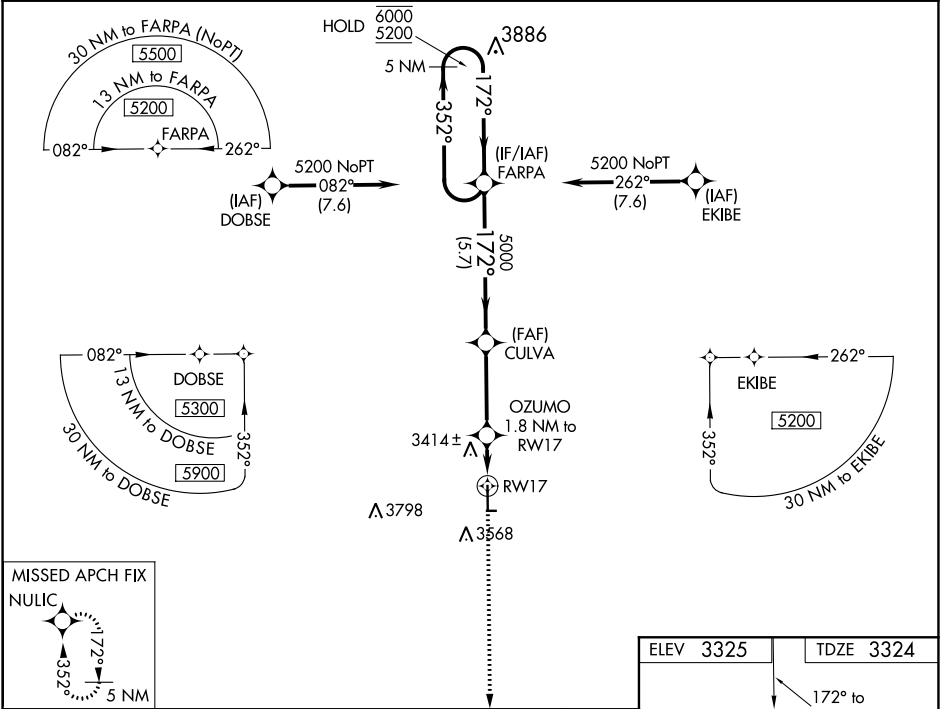


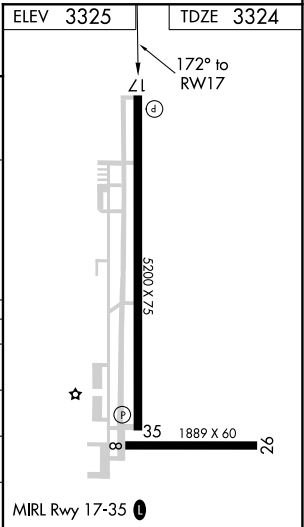
WAAS CH 90243 W17A	APP CRS 172°	Rwy Idg TDZE Apt Elev	5200 3324 3325
--	------------------------	-----------------------------	---

RNAV (GPS) RWY 17
STANTON COUNTY MUNI (JHN)

RNP APCH.		MISSED APPROACH: Climb to 5200 direct NULIC and hold.
AWOS-3P 124.175		UNICOM 122.8 (CTAF) 0



CATEGORY	A	B	C	D
LPV DA		3524-1	200 (200-1)	
LNAV/ VNAV DA		3574-1	250 (300-1)	
LNAV MDA		3680-1	356 (400-1)	
CIRCLING	3880-1	555 (600-1)	4040-2 715 (800-2)	4040-2 1/4 715 (800-2 1/4)



NC-2, 31 DEC 2020 to 28 JAN 2021

NC-2, 31 DEC 2020 to 28 JAN 2021