

MARYSVILLE, KANSAS

AL-6566 (FAA)

19115

WAAS CH <b>82420</b> <b>W34A</b>	APP CRS <b>337°</b>	Rwy Idg <b>4200</b> TDZE <b>1283</b> Apt Elev <b>1283</b>
----------------------------------------	------------------------	-----------------------------------------------------------------

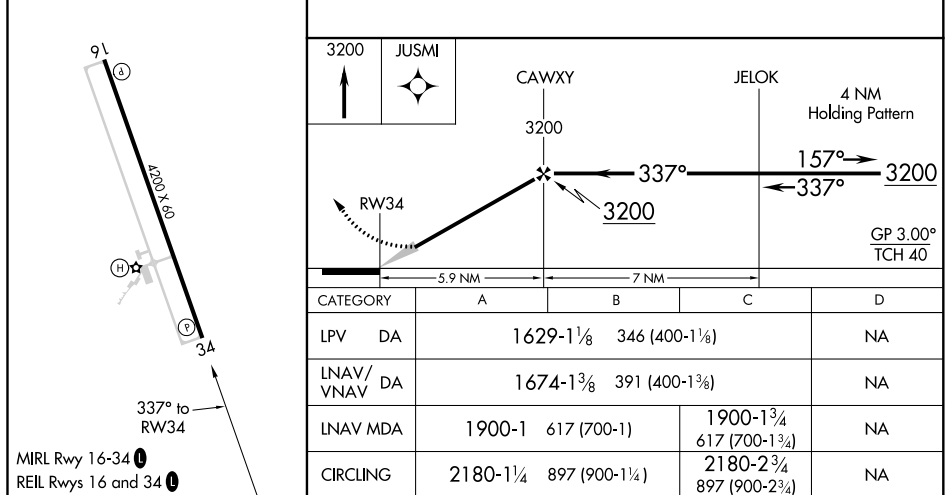
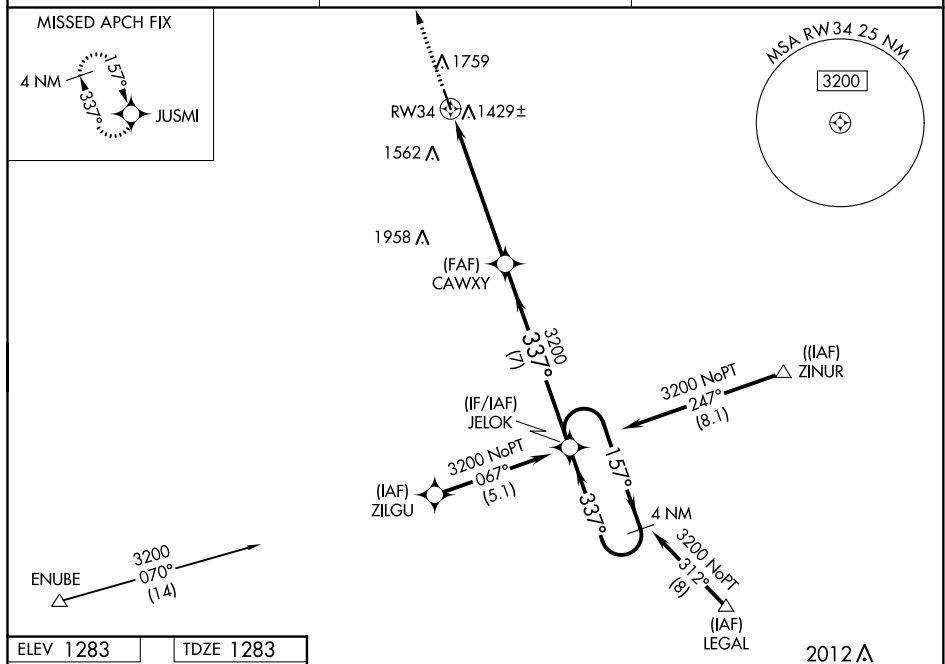
RNAV (GPS) RWY 34  
MARYSVILLE MUNI (MYZ)

RNP APCH.

**T**  
**A** NA When local altimeter setting not received, use Beatrice altimeter setting.  
Baro-VNAV NA when using Beatrice altimeter setting.

**MISSED APPROACH:** Climb to 3200 direct JUSM and hold.

AWOS-3PT <b>118.675</b>	KANSAS CITY CENTER <b>123.8 343.7</b>	UNICOM <b>122.8 (CTAF) 0</b>
----------------------------	------------------------------------------	---------------------------------



MARYSVILLE, KANSAS

Orig-C 25APR19

39°51'N-96°38'W

MARYSVILLE MUNI (MYZ)

## RNAV (GPS) RWY 34

NC-2, 31 DEC 2020 to 28 JAN 2021