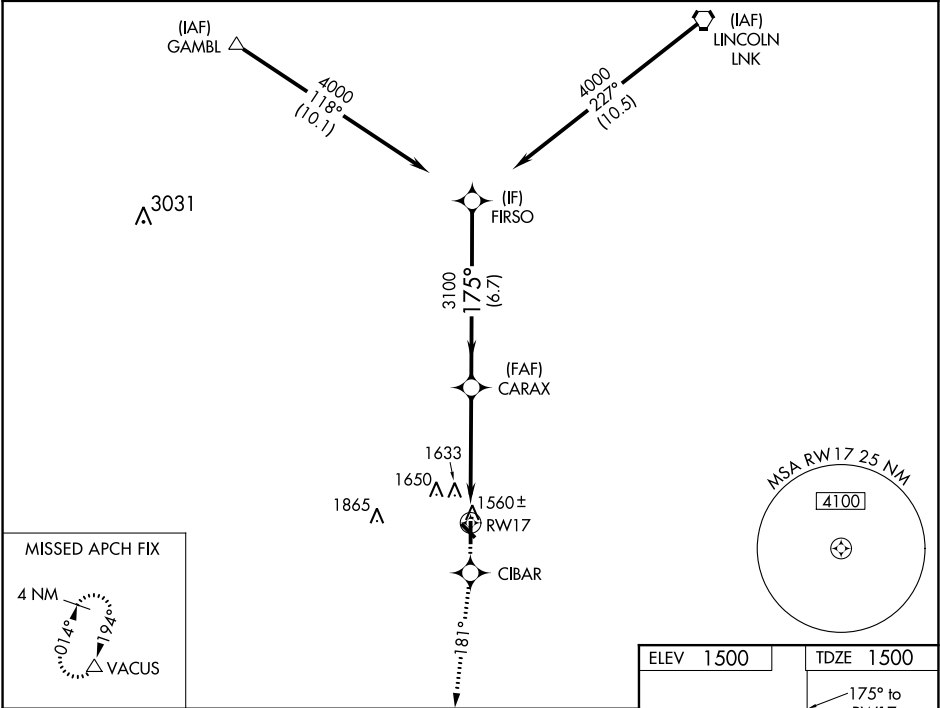


WAAS CH 63107 W17A	APP CRS 175°	Rwy Idg 4201 TDZE 1500 Apt Elev 1500
--	------------------------	---

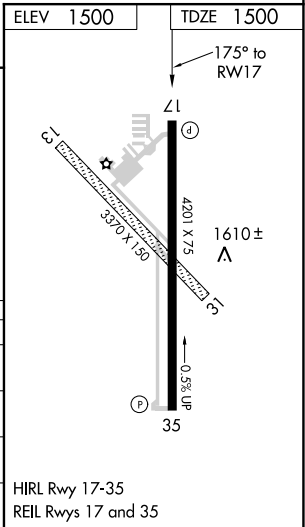
RNAV (GPS) RWY 17
CRETE MUNI (CEK)

Baro-VNAV NA. DME/DME RNP-0.3 NA. Visibility reduction by helicopters NA. Use Lincoln altimeter setting; when not received, use Beatrice altimeter setting.	MISSED APPROACH: Climb to 4000 direct CIBAR and via 181° track to VACUS and hold, continue climb-in-hold to 4000.
---	---

OMAHA APP CON 124.0 270.3	UNICOM 122.8 (CTAF)
-------------------------------------	-------------------------------



4000	CIBAR	VACUS	VGSI and RNAV glidepath not coincident.	
		tr 181° 	FIRSO	
RW17		CARAX	4000	Procedure Turn NA GP 3.00° TCH 40
4.8 NM		6.7 NM		
CATEGORY	A	B	C	D
LPV DA	1875-1¼	375 (400-1¼)	NA	
RNAV/VNAV DA	2051-2	551 (600-2)	NA	
RNAV MDA	2080-1	580 (600-1)	NA	
CIRCLING	2140-1	640 (700-1)	NA	



NC-2, 31 DEC 2020 to 28 JAN 2021

NC-2, 31 DEC 2020 to 28 JAN 2021