

WAAS CH <b>77637</b> <b>W15A</b>	APP CRS <b>146°</b>	Rwy Idg <b>3999</b> TDZE <b>984</b> Apt Elev <b>984</b>
--	------------------------	---

RNAV (GPS) RWY 15

BRENNER FIELD (FNB)

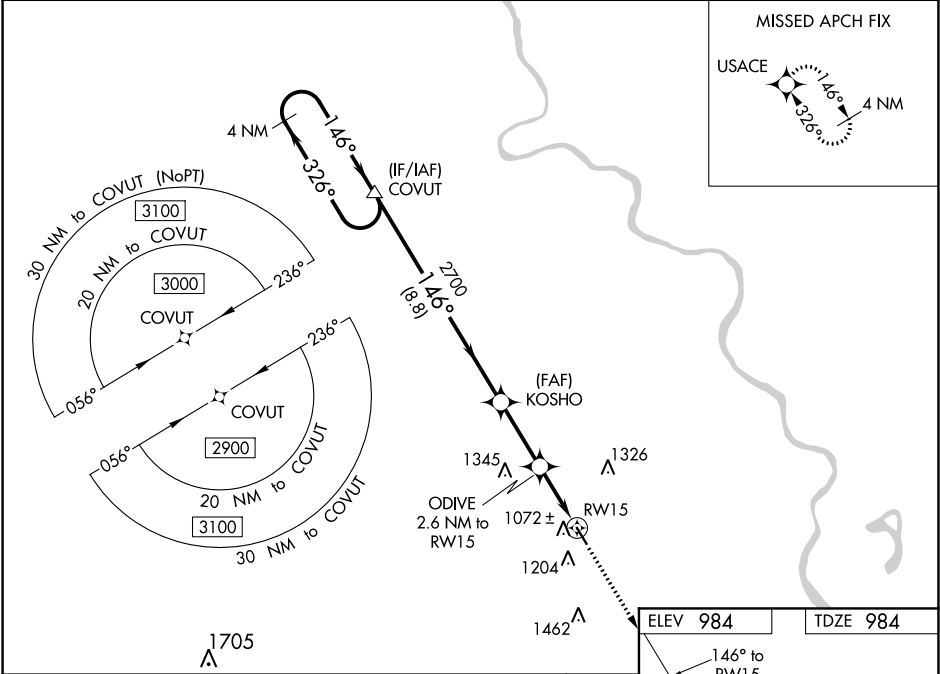
⚠

NA

For uncompensated Baro-VNAV systems, LNAV/VNAV NA below -21°C (-5°F) or above 54°C (130°F). DME/DME RNP-0.3 NA. When local altimeter setting not received, use Nebraska City altimeter setting and increase all DA 104 feet and increase all MDA 120 feet. VDP NA when using Nebraska City altimeter setting. Helicopter visibility reduction below ¾ SM NA. Baro-VNAV NA when using Nebraska City altimeter setting.

MISSED APPROACH: Climb to 3000 direct USACE and hold.

ASOS <b>119.275</b>	ST JOSEPH APP CON <b>120.35 360.8</b>	UNICOM <b>122.8 (CTAF) 0</b>
------------------------	--	---------------------------------



VGSI and RNAV glidepath not coincident.

4 NM Holding Pattern

COVUT

KOSHO

ODIVE 2.6 NM to RW15

\*LNNAV only

\*1 NM to RW15

RW15

GP 3.00° TCH 40

8.8 NM, 2.7 NM, 1.6 NM, 1 NM

CATEGORY	A	B	C	D
LPV DA	1234-1	250 (300-1)	NA	
LNAV/VNAV DA	1234-1	250 (300-1)	NA	
LNAV MDA	1340-1	356 (400-1)	NA	
CIRCLING	1560-1	576 (600-1)	NA	

MIRL Rwy 15-33 0  
REIL Rwy 15 and 33 0

NC-2, 31 DEC 2020 to 28 JAN 2021

NC-2, 31 DEC 2020 to 28 JAN 2021