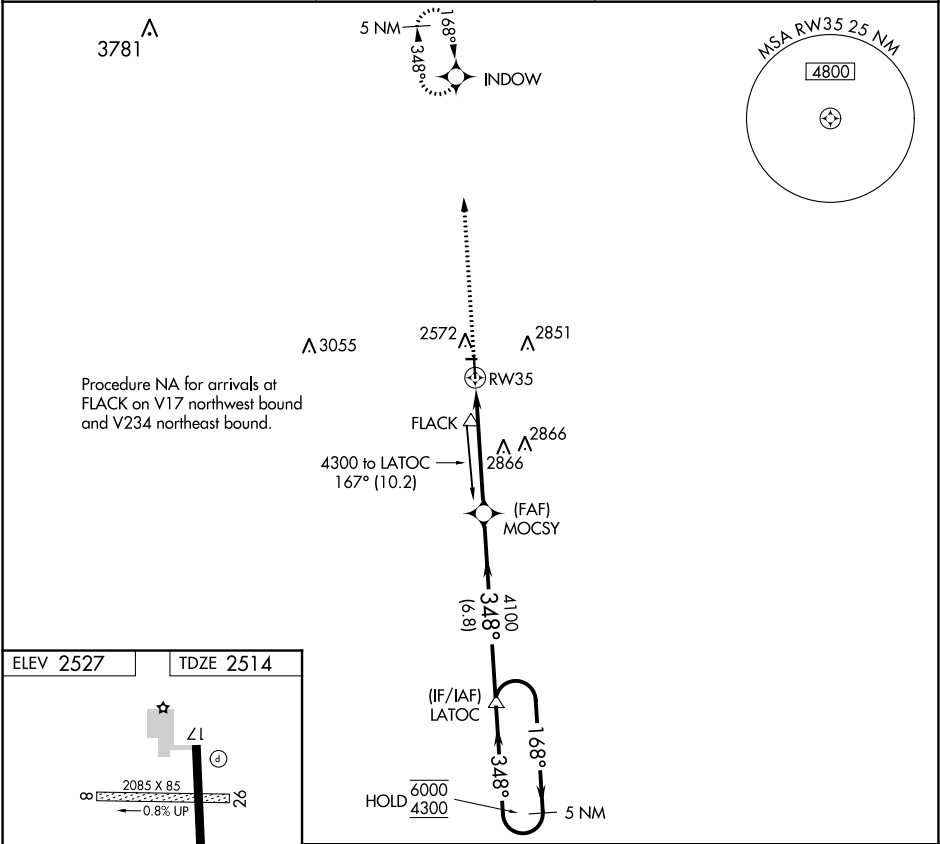


APP CRS	Rwy Idg	4800
348°	TDZE	2514
	Apt Elev	2527

RNAV (GPS) RWY 35
MEADE MUNI (MEJ)

RNP APCH	MISSED APPROACH: Climb to 4300 direct INDOW and hold.
Circling NA to Rwy 8 and 26. Rwy 35 helicopter visibility reduction below 1 SM NA. When local altimeter setting not received, use liberal altimeter setting and increase all MDAs 140 feet.	

AWOS-3 119.425	KANSAS CITY CENTER 134.0 257.625	UNICOM 122.8 (CTAF) 0
-------------------	-------------------------------------	--------------------------



ELEV 2527	TDZE 2514	4300	INDOW	Visual Segment - Obstacles.	5 NM Holding Pattern
CATEGORY	A	B	C	D	
LNAV MDA	3000-1	486 (500-1)	NA		
CIRCLING	3000-1	473 (500-1)	NA		

NC-2, 31 DEC 2020 to 28 JAN 2021

NC-2, 31 DEC 2020 to 28 JAN 2021