

RNP APCH

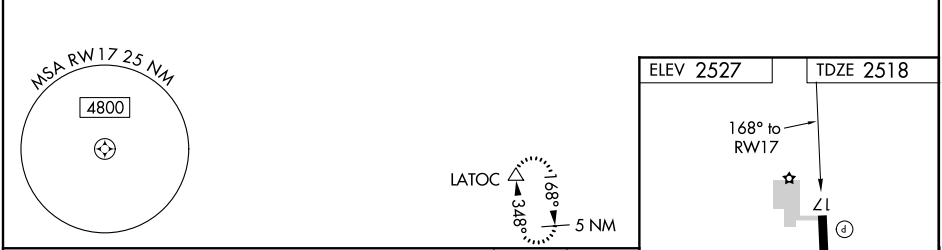
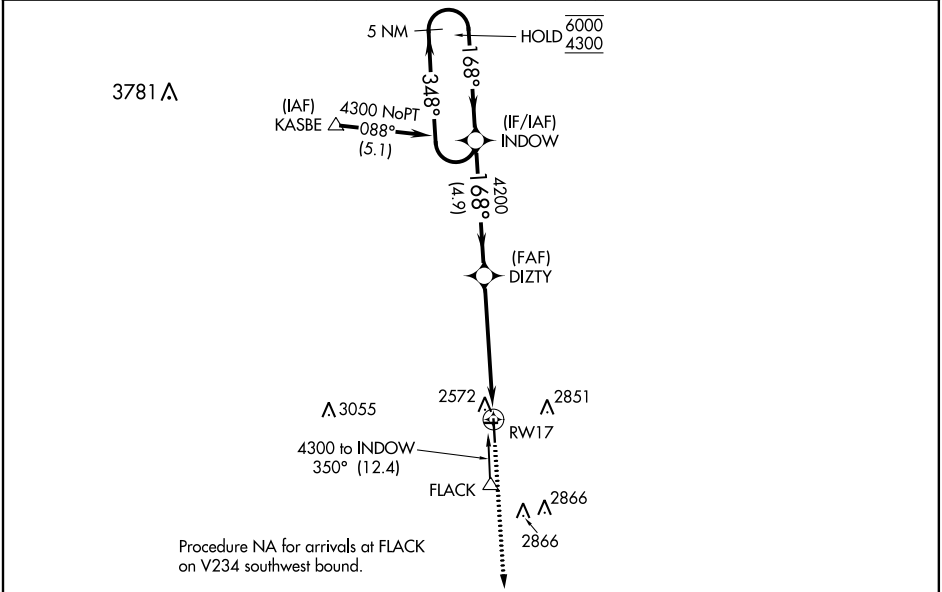
▼

▲ NA

Circling NA to Rwy 8 and 26. Rwy 17 helicopter visibility reduction below 1 SM NA. When local altimeter setting not received, use Liberal altimeter setting and increase all MDAs 140 feet.

MISSED APPROACH: Climb to 4300 direct LATOC and hold.

AWOS-3 119.425	KANSAS CITY CENTER 134.0 257.625	UNICOM 122.8 (CTAF) 0
-------------------	-------------------------------------	--------------------------



5 NM Holding Pattern		Visual Segment - Obstacles.		4300	LATOC
INDOV		DIZTY		↑	△
6000 ← 348° 4300 ← 168°		4200		RW17	
4.9 NM		5.2 NM			
CATEGORY	A	B	C	D	
LNAV MDA	3100-1	582 (600-1)	NA		
CIRCLING	3100-1	573 (600-1)	NA		

ELEV 2527

TDZE 2518

168° to RW17

2085 X 85

0.8% UP

4800 X 75

0.3% UP

35

MIRL Rwy 17-35 0