


WAAS CH 81808 W18A	APP CRS 181°	Rwy Idg TDZE 1414 Apt Elev 1421	6101
--	------------------------	---	-------------

RNAV (GPS) RWY 18

COLONEL JAMES JABARA (AAO)

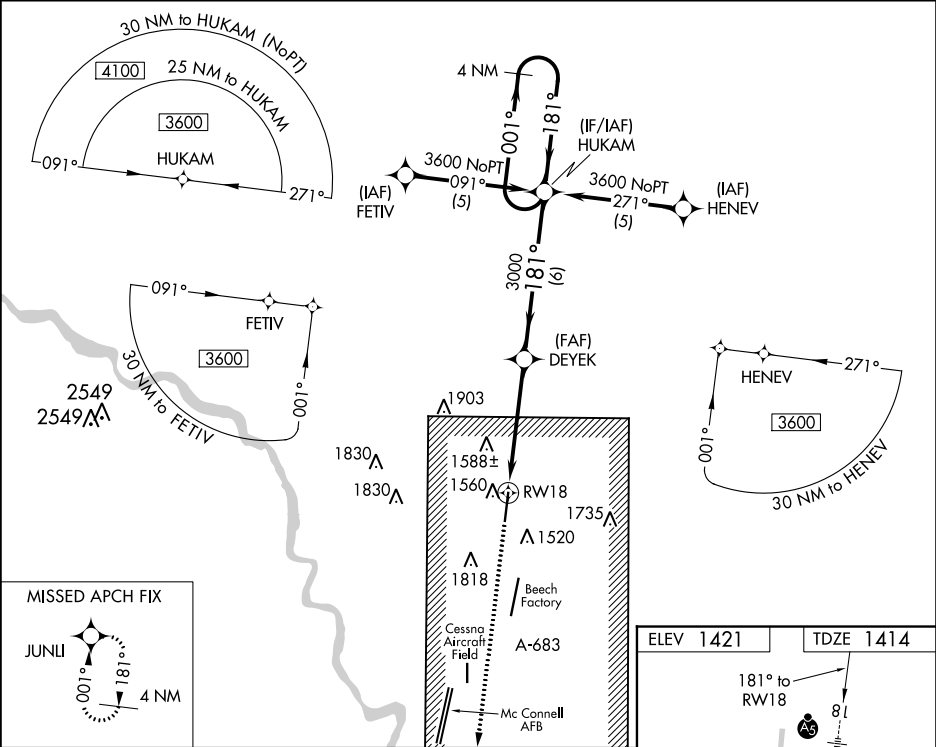
⚠ For inoperative MALSR, increase LPV all Cats visibility to 1 mile and LNAV Cat D visibility to 1¼. DME/DME RNP-0.3 NA. When local altimeter setting not received, use Wichita Dwight D Eisenhower National altimeter setting and increase all DA/MDA 40 feet. VDP NA with Wichita Dwight D Eisenhower National altimeter setting.

MALSR



MISSED APPROACH: Climb to 3600 direct JUNLI and hold.

ASOS 134.025	WICHITA APP CON 134.8 269.1	CLNC DEL 125.0	UNICOM 122.7 (CTAF) 0
------------------------	---------------------------------------	--------------------------	---------------------------------



3600
↑
JUNLI

HUKAM

4 NM Holding Pattern

DEYEK

3000

001° → 3600

← 181°

181°

3000

GP 3.00°
TCH 45

*LNAV only.

*1.2 NM to RW18

1.2

3.6 NM

6 NM

CATEGORY	A	B	C	D
LPV DA	1680-½ 266 (300-½)			
LNAV MDA	1820-½ 406 (400-½)	1820-¾ 406 (400-¾)	1820-1 406 (400-1)	
CIRCLING	1880-1 459 (500-1)	1880-1½ 459 (500-1½)	2120-2¼ 699 (700-2¼)	

1486 ☆

0.3% Up

6101 x 100

36

36

REIL Rwy 36 0

MIRL Rwy 18-36 0