

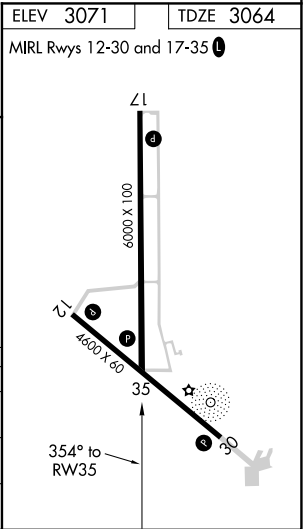
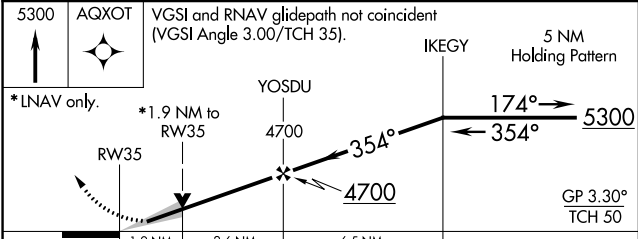
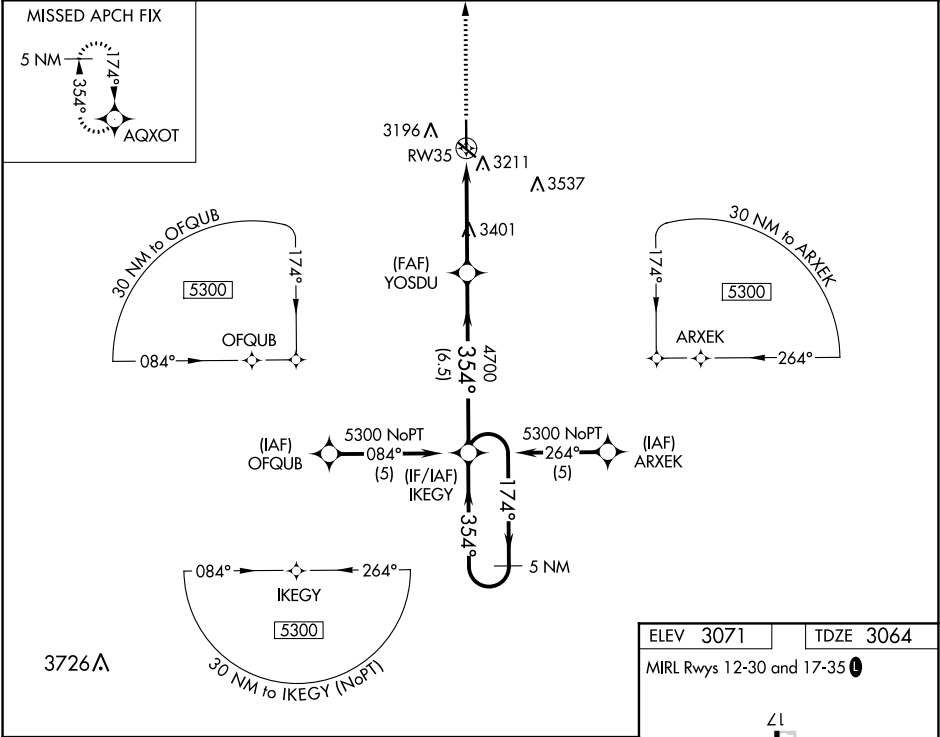
WAAS CH <b>65616</b> <b>W35A</b>	APP CRS <b>354°</b>	Rwy Idg TDZE Apt Elev	<b>6000</b> <b>3064</b> <b>3071</b>
--	------------------------	-----------------------------	---

RNAV (GPS) RWY 35

ULYSSES (ULS)

<div> <div> </div> <div>                     DME/DME RNP-0.3 NA. When local altimeter setting not received, use Garden City altimeter setting and increase LPV DA to 3485 and visibility 3/8 mile all Cats, and all MDA 120 feet; increase visibility LNAV Cats B/C and Circling Cats B/C 1/4 mile. VDP NA with Garden City altimeter setting.                 </div> </div>	MISSED APPROACH: Climb to 5300 direct AQXOT and hold.
--	---

AWOS-3 <b>118.95</b>	KANSAS CITY CENTER <b>125.2 269.4</b>	UNICOM <b>122.8 (CTAF) 0</b>
-------------------------	--	---------------------------------



ULYSSES (ULS)

RNAV (GPS) RWY 35